

**Government
eProcurement
System**

eProcurement System Government of India

Tender Details

Date : 23-Jun-2025 01:38 PM

Print

Basic Details

Organisation Chain	Indian Institute of Technology Ropar		
Tender Reference Number	IITRPR/EE/T/42		
Tender ID	2025_IITRP_865637_1	Withdrawal Allowed	Yes
Tender Type	Limited	Form of contract	EPC Contract
Tender Category	Works	No. of Covers	1
General Technical Evaluation Allowed	No	ItemWise Technical Evaluation Allowed	No
Payment Mode	Offline	Is Multi Currency Allowed For BOQ	No
Is Multi Currency Allowed For Fee	No	Allow Two Stage Bidding	No

Payment Instruments

Offline	S.No	Instrument Type
	1	R-T-G-S
	2	NEFT

Cover Details, No. Of Covers - 1

Cover No	Cover	Document Type	Description
1	Fee/PreQual/Technical/Finance	.xls	DESIGN, SUPPLY AND CONSTRUCTION OF 500 SEATER HOSTEL G plu2 3 Seater USING PRECAST LGSF IN IIT ROPAR

Tender Fee Details, [Total Fee in ₹ * - 590]

Tender Fee in ₹	590		
Fee Payable To	Payable To IIT Ropar Revenue Account	Fee Payable At	Payable At Ropar
Tender Fee Exemption Allowed	No		

EMD Fee Details

EMD Amount in ₹	40,00,000	EMD Exemption Allowed	No
EMD Fee Type	fixed	EMD Percentage	NA
EMD Payable To	Payable To IIT Ropar Revenue Account	EMD Payable At	Payable At Ropar

Work /Item(s)

Title	Design, Supply and Construction of 500 Seater Hostel G plus 2 using Precast LGSF Technology in IIT Ropar on EPC Turnkey basis				
Work Description	Design, Supply and Construction of 500 Seater Hostel G plus 2 using Precast LGSF Technology in IIT Ropar on EPC Turnkey basis				
Pre Qualification Details	Please refer Tender documents.				
Independent External Monitor/Remarks	NA				
Tender Value in ₹	19,94,00,000	Product Category	Construction Works	Sub category	NA
Contract Type	Rate Contract	Bid Validity(Days)	60	Period Of Work(Days)	NA
Location	IIT Ropar	Pincode	140001	Pre Bid Meeting Place	NA
Pre Bid Meeting Address	NA	Pre Bid Meeting Date	NA	Bid Opening Place	IIT Ropar
Should Allow NDA Tender	No	Allow Preferential Bidder	No		

Critical Dates

Publish Date	23-Jun-2025 10:00 AM	Bid Opening Date	07-Jul-2025 11:15 AM
---------------------	----------------------	-------------------------	----------------------

Document Download / Sale Start Date	23-Jun-2025 10:00 AM	Document Download / Sale End Date	07-Jul-2025 11:00 AM
Clarification Start Date	NA	Clarification End Date	NA
Bid Submission Start Date	23-Jun-2025 10:00 AM	Bid Submission End Date	07-Jul-2025 11:00 AM

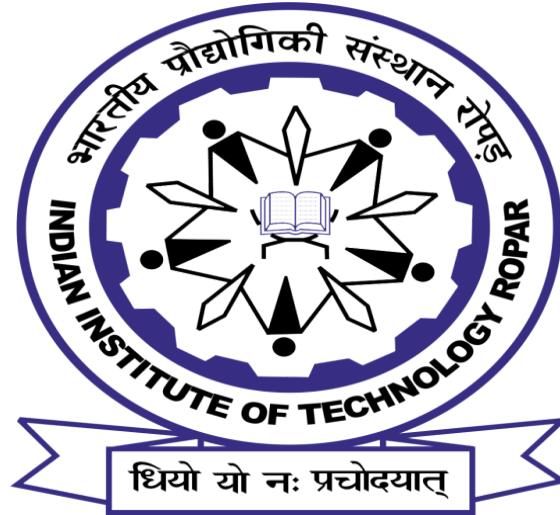
Tender Documents

NIT Document	S.No	Document Name	Description	Document Size (in KB)	
	1	Tendernotice_1.pdf	Design, Supply and Construction of 500 Seater Hostel G plus 2 using Precast LGSF Technology in IIT Ropar on EPC Turnkey basis	2212.24	
Work Item Documents	S.No	Document Type	Document Name	Description	Document Size (in KB)
	1	BOQ	BOQ_910037.xls	Design, Supply and Construction of 500 Seater Hostel G plus 2 using Precast LGSF Technology in IIT Ropar on EPC Turnkey basis	267.50
	2	Tender Documents	RFP.pdf	Design, Supply and Construction of 500 Seater Hostel G plus 2 using Precast LGSF Technology in IIT Ropar on EPC Turnkey basis	2196.29

Tender Inviting Authority

Name	Registrar
Address	Registrar IIT Ropar Punjab

INDIAN INSTITUTE OF TECHNOLOGY ROPAR



DESIGN, SUPPLY AND CONSTRUCTION OF 500 SEATER HOSTEL (G+2, 3 Seater) USING PRECAST/LGSF IN IIT ROPAR ON TURNKEY BASIS

TO BE SUBMITTED TO:

**The Registrar
IIT Ropar
Rupnagar, Punjab**

TABLE OF CONTENTS

S. No	Description	Page
	Memorandum	3-4
	Letter of Invitation	5
	Disclaimer	6-7
	Invitation for Proposal	8
	Introduction	9-10
	Brief description of Bidding Process	11
	Section A	
	General conditions of work and planning	13
	Annexure -I	
	Minimum Requirement of technical representative at site	14
	Annexure - II	
	Establishing Site Laboratory And Testing Of Materials	15
	Annexure - III	
	A Suggestive List Of Plant And Equipment At Site	15
	Annexure - IV	
	Indicative soil investigation report	15
	Scope of Work	16-21
	Section B	
	Conditions & Specifications of Civil and E&M Works	22-32
	Specification of Development Works	33-40
	Section C	
	Payment Schedule	41-42
	Integrity Agreement	43-48
	Arbitration	49
	Approved make list	50-54
	Location Map	55
	Guarantee Bond	60-61
	Financial Quote	62

MEMORANDUM

S. No.	Description	Value / Description to be Applicable for Relevant Clause(s) as per Site
1.	Name of work	Design, Supply and Construction of 500 Seater Hostel (G+2, 3 Seater) Using Precast/LGSF in IIT Ropar on Turnkey Basis
2.	Client / Owner	IIT Ropar
3.	Type of Bid	EPC
4.	Earnest Money Deposit	Rs. 40 Lakh
5.	Estimated Cost	Rs. 19.94 Cr.
6	Time allowed for construction of work	210 days
7	Mobilization Advance	Nil
8	Performance Guarantee	5.00% (Five Percent Only) of contract value within 15 days from the issue of Letter of Award. Maximum allowable 30 days. After 15 days a late fee @ 0.1% per day of PG amount shall be payable which will be non-refundable.
9	Security Deposit / Retention Money	2.5% (Two point Five Percent Only) of the gross value of each running / final bill to be deducted & returned as per clause of GCC for EPC
10	Pre-bid meeting	Tuesday, June 24,2025 at 1130 hours
11	Time allowed for starting the work	The date of start of contract shall be reckoned from the date of handing over the site or approvals whichever is earlier.
12	Escalation	All rates as quoted by participating agencies shall be firm and fixed for the entire contract period as well as extended period for completion of the works. No escalation shall be applicable on this contract. Escalation cost towards any change in statutory taxes will be accepted.
13	Defect Liability Period	36 Months after issuance of date of Completion Certificate by IIT Ropar
14	Operation and Maintenance	24 Months after successful completion of the defective liability period
15	Standard Specifications	1. Light Gauge Steel Framed Structures (LGSF) BMTPC 2. CPWD Specification Volume-1 2019 3. CPWD Specification Volume-2 2019

		4. CPWD Handbook on Data Connectivity framework in public building 5. CPWD General Specifications for Heating, Ventilation & Air-Conditioning (HVAC) works 2024 6. CPWD Specifications for Electrical works Part-1 Internal 2023 7. CPWD Specifications for Electrical works Part-2 External 2023 8. CPWD General Specifications for Electrical Works Part-VI Fire Detection and Alarm System 2018 9. CPWD General Specifications for Electrical Works Part-V (Wet Riser & Sprinkler System) 2020 10. Compendium of Architectural Norms & Guidelines for Educational Institutions
16	Authority for fixing compensation under Clause -2 Extension of time, Rescheduling of Milestones and Shifting of date of start in case of delay in handing over of site and deciding reduced rates.	Associate Dean, Infrastructure, IIT Ropar
17	Extra Items, deviation items, substitute items etc.	No claim for any such items shall be entertained and shall not be payable.

INDIAN INSTITUTE OF TECHNOLOGY ROPAR

LETTER OF TRANSMITTAL

Dated:.....

To,

.....
.....
.....

Subject: RFP for Design, Supply and Construction of 500 Seater Hostel (G+2, 3 Seater) Using Precast/LGSF in IIT Ropar on Turnkey Basis

Dear Sir,

Pursuant to your application in response to our Expression of Interest for the above said project (the EoI), you have been shortlisted as a Bidder.

You are requested to participate in the RFP Stage and submit your proposal (the BID) for the aforesaid project in accordance with this RFP.

Please note that the IIT Ropar reserves the right to accept or reject all or any of the bids without assigning any reason whatsoever.

Thanking you,

Yours faithfully

(Signature, name and designation of the Signatory)

DISCLAIMER

The information contained in this Request for Proposal document (the “**RFP**”) or subsequently provided to Bidder(s), whether verbally or in documentary or any other form by or on behalf of the IIT Ropar or any of its employees or advisors, is provided to Bidder(s) on the terms and conditions set out in this RFP and such other terms and conditions subject to which such information is provided.

This RFP is not an agreement and is neither an offer nor invitation by IIT Ropar to the prospective Bidders or any other person. The purpose of this RFP is to provide interested parties with information that may be useful to them in making their financial offers (Bids) pursuant to this RFP. This RFP includes statements, which reflect various assumptions and assessments arrived at by the IIT Ropar in relation to the Project. Such assumptions, assessments and statements do not purport to contain all the information that each Bidder may require. This RFP may not be appropriate for all persons, and it is not possible for the IIT Ropar, its employees or advisors to consider the investment objectives, financial situation and particular needs of each party who reads or uses this RFP. The assumptions, assessments, statements and information contained in the Bidding Documents, may not be complete, accurate, adequate or correct. Each Bidder should, therefore, conduct its own investigations and analysis and should check the accuracy, adequacy, correctness, reliability and completeness of the assumptions, assessments, statements and information contained in this RFP.

Information provided in this RFP to the Bidder(s) is on a wide range of matters, some of which may depend upon interpretation of law. The information given is not intended to be an exhaustive account of statutory requirements and should not be regarded as a complete or authoritative statement of law. The IIT Ropar accepts no responsibility for the accuracy or otherwise for any interpretation or opinion on law expressed herein.

The IIT Ropar, its employees and advisors make no representation or warranty and shall have no liability to any person, including any Applicant or Bidder under any law, statute, rules or regulations or tort, principles of restitution or unjust enrichment or otherwise for any loss, damages, cost or expense which may arise from or be incurred or suffered on account of anything contained in this RFP or otherwise, including the accuracy, adequacy, correctness, completeness or reliability of the RFP and any assessment, assumption, statement or information contained therein or deemed to form part of this RFP or arising in any way for participation in this Bid Stage.

The IIT Ropar also accepts no liability of any nature whether resulting from negligence or otherwise howsoever caused arising from reliance of any Bidder upon the statements contained in this RFP.

The IIT Ropar may in its absolute discretion, but without being under any obligation to do so, update, amend or supplement the information, assessment or assumptions contained in this RFP.

The issue of this RFP does not imply that the IIT Ropar is bound to select a Bidder or to appoint the Selected Bidder or Supplier, as the case may be, for the Project and the IIT Ropar reserves the right to reject all or any of the Bidders or Bids without assigning any reason whatsoever.

The Bidder shall bear all its costs associated with or relating to the preparation and submission of its Bid including but not limited to preparation, copying, postage, delivery fees, expenses associated with any demonstrations or presentations which may be required by the IIT Ropar or any other costs incurred in connection with or relating to its Bid. All such costs and expenses will remain with the Bidder and the IIT Ropar shall not be liable in any manner whatsoever for the same or for any other costs or other expenses incurred by a Bidder in preparation or submission of the Bid, regardless of the conduct or outcome of the Bidding Process.

INVITATION FOR PROPOSAL

INTRODUCTION

Back Ground

The Indian Institute of Technology Ropar (IIT Ropar) is an engineering and technology Institute that was established in 2008, located in Rupnagar (Ropar), Punjab, India. It is part of the prestigious Indian Institutes of Technology system which has been the cornerstone of higher technical education in India. Since its inception, IIT Ropar has strived to achieve excellence in science and engineering education, research, and innovation, which are reflected in its impressive national and international rankings.

IIT Ropar operates from a sprawling 501 -acre campus that offers state-of-the-art facilities for learning and research. The infrastructure includes the Super Academic Block, modern laboratories, research centers, library, IT Centre and Multiple sports facility equipped with extensive digital resources to support the institute's academic programs. The campus is designed to be eco-friendly, integrating sustainable practices as per international norms.

The academic structure at IIT Ropar is designed to foster a robust educational environment. It offers Undergraduate, Postgraduate, and Doctoral programs across various disciplines of engineering, science, and humanities. The B.Tech program, particularly in disciplines like Computer Science, Electrical Engineering, Mechanical Engineering, and Chemical Engineering, is highly acclaimed in the industry and academia. These programs are characterized by a curriculum that balances theoretical knowledge with practical application, ensuring students are well-prepared for the demands of the global standards.

Postgraduate programs such as M.Tech and M.Sc enhance specialized knowledge, while the Ph.D. programs encourage original research contributions, underpinned by the institute's strong research culture. IIT Ropar has established several centers of excellence in areas such as Artificial Intelligence, Water Resources, and Energy Solutions, which are critical to the technological and sustainable advancement of society.

Recently, The Institute has started to offer a new 4-Year Integrated Teacher Education Programme from the current academic session.

Research at IIT Ropar is cutting-edge, with faculty and students engaging in projects that span across interdisciplinary domains. These research initiatives are often supported by national and international grants. The institute has collaborations with several top universities and research institutions around the world, facilitating a cross-pollination of ideas and exposing students to global challenges and innovations.

One of the hallmarks of IIT Ropar is its emphasis on innovation and entrepreneurship. The institute has incubation centers and innovation labs that encourage students and researchers to develop their ideas into viable business solutions. This not only contributes to India's growing start-up ecosystem but also fosters a spirit of self-sufficiency and creativity among students.

The student life at IIT Ropar is vibrant and diverse. The institute is home to students from all over India and the world, creating a multicultural environment that enriches the campus life. A wide range of cultural and technical festivals organized by students, serve as platforms for showcasing talent and fostering interpersonal skills. The institute also prioritizes physical well-being, providing facilities for various sports and fitness activities.

Community engagement is another aspect where IIT Ropar makes significant contributions. Through various outreach programs, students and faculty work in local communities, applying their technical knowledge to solve real-world problems. This not only benefits the communities but also instills a sense of social responsibility in the students.

In conclusion, the Indian Institute of Technology Ropar is not just a premier engineering institution but a vibrant academic ecosystem that nurtures future leaders in technology and science. With its focus on high-quality education, research, and innovation, IIT Ropar plays a crucial role in advancing the frontiers of knowledge and contributing to the development of the nation and the world.

Brief particulars of the Project are as follows:

Design, Supply and Construction of a 500 seater hostel (G+2, 3 seater) using Precast/LGSF technology in IIT Ropar on turnkey basis.

The Selected Bidder, shall be responsible for Design, Supply and Construction of a 500 seater hostel (G+2, 3 seater) using Precast/LGSF technology in IIT Ropar on turnkey basis in accordance with the provisions of an agreement for Design, Supply and Construction of a 500 seater hostel (G+2, 3 seater) using Precast/LGSF technology in IIT Ropar on turnkey basis to be entered into between the Selected Bidder and the Institute (IIT Ropar) in the form provided by the IIT Ropar as part of the Bidding Documents pursuant hereto.

The scope of work will broadly include Design, Supply and Construction of a 500 seater hostel (G+2, 3 seater) using Precast/LGSF technology in IIT Ropar on turnkey basis.

The statements and explanations contained in this RFP are intended to provide a better understanding to the Bidders about the subject matter of this RFP and should not be construed or interpreted as limiting in any way or manner the scope of services and obligations of the Supplier set forth in the Agreement for Designing and Construction of 500 Seater Hostel (G+2, 3 seater) or the IIT Ropar's rights to amend, alter, change, supplement or clarify the scope of work, the Contract to be awarded pursuant to this RFP or the terms thereof or herein contained. Consequently, any omissions, conflicts or contradictions in the Bidding Documents including this RFP are to be noted, interpreted and applied appropriately to give effect to this intent, and no claims on that account shall be entertained by the IIT Ropar.

The IIT Ropar shall receive Bids pursuant to this RFP in accordance with the terms set forth in this RFP and other documents to be provided by the IIT Ropar pursuant to this RFP, as modified, altered, amended and clarified from time to time by the IIT Ropar (collectively the "**Bidding Documents**"), and all Bids shall be prepared and submitted in accordance with such terms on or before the date specified for submission of Bids (the "**Bid Due Date**").

Brief description of Bidding Process

1. The IIT Ropar has adopted a two-stage process (collectively referred to as the "**Bidding Process**") for selection of the Bidder for award of the Project. The first stage (the "**Qualification Stage**") of the process involved pre-qualification of interested parties in accordance with the provisions of the EOI. At the end of the Qualification Stage, the IIT Ropar short-listed Applicants who are eligible for participation in this second stage of the Bidding Process (the "**Bid Stage**") comprising Request for Proposals.
2. In the Bid Stage, the aforesaid short-listed Applicants, including their successors, (the "**Bidders**") are being called upon to submit their financial offers (the "**Bids**") in accordance with the terms specified in the Bidding Documents. The Bid shall be valid for a period of not less than 120 days from the date specified for submission of bids (the "**Bid Due Date**").
3. The Bidding Documents include the draft Agreement for Designing and Construction of 500 Seater Hostel (G+2, 3 seater) [which is enclosed/ which will be provided to the Bidders]. Subject to the provisions of Clause 2.1.3, the aforesaid documents and any addenda issued subsequent to this RFP Document, will be deemed to form part of the Bidding Documents.
4. A Bidder is required to deposit, alongwith its Bid, a bid security of [Rs. ----- (Rupees -----)] (the "**Bid Security**"), refundable not later than 60(sixty) days from the Bid Due Date returnable after award of work except in the case of the Selected Bidder whose Bid Security shall be retained till the bidder has provided a Performance Security under the Agreement for Designing and Construction of 500 Seater Hostel (G+2, 3 seater). The Bidders will have an option to provide Bid Security in the form of a demand draft or a bank guarantee in favour of IIT Ropar Revenue Account Ropar and in such event, the validity period of the demand draft or bank guarantee, as the case may be, shall not be less than 180 (one hundred and eighty) days from the Bid Due Date, inclusive of a claim period of 60 (sixty) days, and may be extended as may be mutually agreed between the IIT Ropar and the Bidder from time to time. The Bid shall be summarily rejected if it is not accompanied by the Bid Security.
5. During the Bid Stage, Bidders are invited to examine the Bidding Documents in greater detail, and to carry out, at their cost, such studies as may be required for submitting their respective Bids for award of the Contract including implementation of the Project.
6. The contract period shall be pre-determined and specified in the Bidding Documents.
7. In this RFP, the term "**Lowest Bidder**" shall mean the Bidder who is offering the lowest price.

Generally, the Lowest Bidder shall be the Selected Bidder. The remaining Bidders shall be kept in reserve and may, in accordance with the process specified in this RFP, be invited to match the Bid submitted by the Lowest Bidder in case such Lowest Bidder withdraws or is not selected for any reason. In the event that none of the other Bidders match the Bid of the Lowest Bidder, the IIT Ropar may, in its discretion, either invite fresh Bids from the remaining Bidders or annul the Bidding Process.

Further and other details of the process to be followed at the Bid Stage and the terms thereof are spelt out in this RFP.

Any queries or request for additional information concerning this RFP shall be submitted in writing or by e-mail to the officer designated below.

AD Infrastructure. Email : ad.infra@iitrpr.ac.in with copy to ee@iitrpr.ac.in, aee@iitrpr.ac.in and jr.enm@iitrpr.ac.in

SECTION - A

General conditions of work and planning

- 1.1 Use of Technology – The agency shall use the technology as proposed during the presentation during the expression of interest. The technology proposed should have sufficient credentials and authentic performance certification for its soundness by any IIT.
- 1.2 It will be the responsibility of the agency to establish that the proposed technology is worth adopting for the work and shall provide value addition in respect of quality and time.
- 1.3 The agency shall provide detailed specification and execution methodology to the execution of the work. The agency shall support the proposal along with the details where this technology has been successfully used in the prescribed Performa given in this bid. The agency shall make their own arrangement for visit to the site at their own expense.
- 1.4 The agency shall engage professionals with experience of proposed technology as per the list mentioned in the annexure I.
- 1.5 All necessary measures like thermal comfort, fire fighting provisions, natural light and ventilation etc. shall be taken by the agency to provide as per NBC 2016, ECBC code, CPWD specifications and as defined in the scope of work. The design of the building should comply with local body / Punjab Town & Country Planning norms. The agency has to follow the condition laid down in Environmental clearance, consent to establish.
- 1.6 The agency shall submit the list of equipment for test and locations of the same along with the proposal of technology. The decision of competent authority shall be final in this matter.
- 1.7 The agency shall provide the list and the number of T&P/equipment. The agency shall engage the same during the execution.

MINIMUM REQUIREMENT OF TECHNICAL REPRESENTATIVE AT SITE**Requirement of Technical Representative(s) and recovery Rates**

S. No	Requirement of Technical staff		Minimum experience (years)	Designation of Technical staff	Rate of recovery
	Qualification	Strength			
1	Graduate Engineer	01 No.	15 (and having experience of one similar nature of work)	Project Manager	Rs. 1,00,000/- per month
2	Graduate (MEP) Engineer	01 No.	-do-	Deputy Project Manager	Rs. 80,000/- per month
3	Civil Graduate Engineer or Diploma Engineer	01 Nos.	5 to 10	Project / Site Engineer	Rs. 50,000/- per month per person
4	Electrical Graduate Engineer or Diploma Engineer	01 No.	5 to 10	Project / Site Engineer	Rs. 50,000/- per month per person
5	Civil Diploma Engineer	02 Nos.	5	Supervisors	Rs. 30,000/- per month per person
6	Electrical Diploma Engineer	02 Nos.	3	Supervisors	Rs. 30,000/- per month per person
7	Mechanical / HVAC and Plumbing Engineer	02 Nos.	5	Supervisors	Rs. 30,000/- per month per person
8	IT / Communication / MCA	01 No.	5	IT Engineer	Rs. 50,000/- per month per person

Note:

1. Assistant Engineers retired from Government services, who are holding Diploma will be treated at par with graduate engineers. Diploma holder with minimum 10-years relevant experience with a reputed construction company can be treated at par with graduate engineers for such deployment subject to the condition that such Diploma holders should not exceed 50% of requirement of degree engineer.
2. The above given strength shall be required to be deployed as and when necessity arises at site or so directed by Competent Authority.
3. The selected agency shall submit a certificate of employment of the technical representative(s) along with every account bill / final bill and shall produce evidence of regular physical availability of such engineers on the above project if at any times so required by the Competent Authority.

Annexure-II

ESTABLISHING SITE LABORATORY AND TESTING OF MATERIALS

(as per Proposed Technology)

Duly calibrated Equipments for conducting necessary tests shall be provided and installed at site in the well furnished site laboratory by the agency at its own cost to establish that the work is being done as per contract specifications and standards. It is also suggested that site laboratories need to be kept at standard Atmospheric Temperature and humidity. Trained lab staff should be provided for carrying out tests in presence of Engineer in Charge or his authorized representative.

Annexure – III

A SUGGESTIVE LIST OF PLANT AND EQUIPMENT AT SITE

(as per Proposed Technology) – to be provided by the Selected agency

The plant and equipment as required for the technology are to be provided by the selected agency here. The space for setting up such onsite facilities shall be provided by the Institute for production of components / store / yard as applicable.

Annexure- IV

Indicative soil investigation report

The indicative soil investigative report is enclosed for reference. However, the responsibility of soil investigation is in the scope of the agency and nothing extra shall be paid on the account.

Scope of work

1. The scope of work includes architectural design, structural design and detailed drawings of all required services for commencement of work, execution of work & services and handover of the assets after making them habitable in all respects. The scope is inclusive of Topographic survey, sub soil investigation and all ancillary survey/ study required for the works. The cost of labour, material, tools and plants, machinery required for execution of the whole project as per the planned, detailed design and drawing, statutory approvals is within the scope of this work. The work is to be executed on EPC mode as per CPWD Manual and SOP.
2. The salient features are as follows:

S. No.	Requirements	Description
1	Construction Technology	LGSF/Precast
2	Plinth level	600mm <u>above the nearest road or</u> plinth level of existing sutlej hostel, whichever is higher
3	Plot size (approx)	50m x 55m
4	Capacity (minimum)	500 Seater (Girls Hostel)
5	Tentative area	5328 sq.m.
6	Hostel Room size	15.64 sqm
7	Number of stories	G+2
8	Common area to be kept	on each floor
9	Dry area to be kept	on each floor
10	Laundry requirement	on ground floor
11	PWD hostels room to be kept at ground floor	05 rooms along with attached washrooms as per PWD norms
12	Caretaker room	on ground floor

3. Conducting all studies as per the requirement at site such as:
 - a. Topographical survey, Sub soil investigation, hydrological or any survey/study required.
 - b. Other as required for the work.
4. Design of all Architectural / Civil /Electrical/HVAC & Mechanical services, their integration and installation, commissioning, including preparation of construction drawings, shop drawings, conducting necessary surveys and field tests to facilitate designing process.

5. Central Public Works Department General Conditions of Contract EPC Projects 2024 shall form the part of Contract and its conditions shall be followed.
6. The land is free from encroachment and all encumbrances and there is no hindrance in execution of the work. The agency shall fix a permanent benchmark at the site of work. Plinth level shall be as per CPWD norms, however, it should not be less than the plinth level of the existing sutlej hostel. The general ground level of the entire building shall be above the adjoining external road level. The data provided in this RFP is indicative and for general reference. Changes, if any, would not affect the agreed rates and no claim on this account shall be entertained.
7. Providing and erecting 03 (three) metre high temporary / barricading using brand new profile sheet with MS tubular members of appropriate sizes as approved by Engineer-in-charge on the construction site. After completion of work, the contractor will take away all the barricading material. Nothing shall be paid on this account.
8. Soil investigation report for indicative purpose is enclosed for ready reference. However, the sole responsibility of soil investigation is in the scope of the agency and nothing extra shall be paid on this account.
9. To prepare complete structural design drawings for foundation, super structure, services and for other structures to be provided/constructed within the works area as per the provision contained in IS codes / NBC 2016 taking into account the provisions for design seismic/wind loads to be considered for structure. The structural drawings are to be vetted from any IIT and submitted to IIT Ropar. On approval of the structural drawings, if any modifications in design/drawing is needed as per site conditions, the agency shall do/re-do without any extra cost. No claim whatsoever will be entertained on this account.
10. Planning, designing and execution of all internal services like LAN network, internal sanitary, water supply, drainage system, point wiring, fire alarm system, fire fighting system, fitting, fixtures and testing etc. complete for the buildings planned including all its fittings, fixtures, testing, connecting with the existing MEP services for making it functional in all respects etc.
11. Planning, designing and execution of all external services like water supply, drainage system, roads, paths, providing and laying HT & LT panels & cables, storm water drain, water tanks, plumbing, Optical fiber cables, SITC of pumps and standby pumps for water supply and for firefighting both, including required connections as per approved drawings / specifications and as directed by Engineer-in-charge and all connected sub structures, super structures within the premises, as per by laws and norms including making connections with the peripherals services after getting the services design approved, connecting with the existing MEP services for making it functional in all respects.
12. Planning, designing and installation of Active and Passive IT components, CAT 6A cable, UPS, CCTV, Networking including giving LAN ports in each room of the hostel including common room, caretaker and PWD hostel room.. The provision of HVAC and compound lighting, waste water recycle system, including all equipments etc. shall be in the scope of the agency. The decision of the Competent Authority shall be final.

13. Preparation of landscaping plan including details etc. and execution of same including wastewater management system, installation of pumps therein etc. complete will be responsibility of selected agency. Construction of boundary wall made of barbed wire with fencing, providing MS gate railings (including painting) etc. shall be completed as per the specification and drawing approved by the Competent Authority.
14. Complete leveling/ dressing including filling of earth, its supply, disposal of surplus earth is to be completed as directed by the Competent Authority. Nothing extra shall be paid gpt disposal of malba, surplus, earth.
15. Planning, designing and construction of MS gates, sign boards, guide maps, location boards, direction boards, Numbering of hostel rooms etc. all complete as per the drawing approved and direction of Competent Authority.
16. Setting up a testing laboratory at site equipped with the apparatus (As per the List of the laboratory equipment given in Annexure of in this bid document) needed for day to day testing of construction materials during construction period as directed by the Competent Authority.
17. Taking all precautionary measures to safeguard safety measures against any accidents for the agency, labour, public and staff by providing all necessary safety equipment, helmet etc. at the work site.
18. The scope as described above is only indicative and not exhaustive. In addition to the above the agency shall be responsible for executing all the items required for completing the hostels in all respect to make the hostels habitable and ready for occupation with electrical and other essential works complete as per direction of Competent Authority.
19. Preparation of all submission drawings (any numbers)/materials as required.
20. The As Built drawings should be submitted in both soft and hard copies (minimum 3 copies) as required for local body approval.
21. Connecting hostels with the external services with schematic planning and design like water supply, sewerage system, storm water drains, boundary wall, gates, STP, roads, paths/ramp, path for differently abled person friendly corridor, signage's, landscape as per green area norms.
22. Schematic planning and designing and execution of Internal Electrifications, fire-fighting system, electric, external lighting, and any other essential services/ requirements of the Competent Authority required for satisfactory completion of the project. The Planning and design should conform to the relevant NBC 2016 and local building bye-laws as applicable.
23. Preparation of 3D views and blow ups of typical and critical areas.
24. Framing and preparation of structural system as per proposed technology.
25. Building/ structure wise structural analysis and design using applicable software's.

26. Preparation of building/structure wise preliminary structural drawings.
27. Preparation of building/structure wise detailed structural ‘Good for construction’ drawings.
28. The structural design shall be carried out in terms of latest editions and up-to-date correction/ amendment / errata of BIS Codes (Bureau of India Standards), other relevant seismic / other codes for making building hazard resistant for other natural calamity, sound engineering practices. The agency will get proof checking of structural drawings with IITs prior approval of competent authority for proof checking of structural drawings/ proposals prepared by the structural sub consultant / main consultant. The fee for proof checking shall be borne by the agency. Nothing shall be paid on this account.
29. Submission of all design calculations in hard and soft copies as per the direction of Competent Authority.
30. The agency shall prepare the phase wise (monthly) resource chart (materials, manpower and machinery) based on the project execution schedule as mentioned in contract conditions.
31. The agency shall submit the photographs and videos of progress of work on fortnightly basis to make it possible to create a short film of the entire execution of the work to be kept in archive.
32. Agency shall submit a detailed monthly progress and program report to the Competent Authority.
33. The agency shall be represented by a senior level executive who has sufficient financial powers to take decisions required for completing the project in time.
34. The agency shall stick to the construction schedule, if there is any hindrance or delay due to any reason the same shall be mitigated through engaging extra manpower, material and machinery.
35. The agency shall submit every month along with “Progress Report”, the details of “Funds Requirements” for the next three months.
36. The agency shall enter a contract agreement within 15 days from the date of issue of Letter of Award for the purpose of execution of the contract. The agency shall have to attend all the meetings at IIT Ropar, at his own cost with statutory authorities during the period of the contract, as and when required and fully cooperate with such personnel and agencies involved during these discussions.
37. A project monitoring committee (PMC) will be set up at IIT Ropar to oversee the entire progress of construction.
38. The PMC shall work out suitable strategy for routine supervision of the projects as felt necessary.
39. The PMC shall meet at least once in a month and will report periodic progress of the project to IIT Ropar till the handing over of the project.

40. Statutory compliance like EPF, ESIC, BoCW, labour register and any other statutory compliance are in the scope of agency.
41. No payment shall be made for dewatering and for idle labour during the project. Thus the price quoted is inclusive of these and nothing extra shall be paid.
42. HVAC room temperature in hostels shall be 26 degree centigrade in summer and 21 degree centigrade in winter. Variation of +/- 1 degree centigrade is permissible.
43. During the operation and maintenance work, the following manpower shall be provided with all necessary material:

S. No.	Manpower	Qualification	Experience	Quantity	Rate of recovery in case of non-deployment
1	Plumber	ITI in relevant trade	5 years	02	Rs. 30,000 per month
2	Carpenter	ITI in relevant trade	5 years	01	Rs. 30,000 per month
3	Electrician	ITI in relevant trade	5 years	02	Rs. 30,000 per month
4	VRV Technician	ITI in R & AC	5 years in VRV/VRF technology	02	Rs. 30,000 per month
5	Site Engineer	B. Tech. / Diploma in civil/ electrical/ mechanical	5 years	01	Rs. 50,000 per month

43. Description of Milestone

S. No.	Description of Milestones D = Date of Award of work	Time allowed in months	Amount to be withheld in case of non achievement of Milestone
1	Submission of design and drawing of civil, electrical, plumbing, Firefighting, VRV/VRF, Networking, sanitary etc. including drawings showing integration with existing services for making the hostel functional. Architectural, Structural drawings, vetting of structural drawing from any IIT and submission for approval to IIT Ropar	D + 1 months	0.75%
2	Completion of excavation work, laying of foundation and upto plinth level of hostels.	D + 2.5 months	0.25%
3	Completion of superstructure - structural skelton of external walls, slabs and other structural members of hostels	D + 4 months	1.0%
4	Completion of roof, doors and windows, plumbing, drainage sanitary works, civil fixtures, internal and external painting at all floors	D + 5 months	1.0%
5	Completion of internal electrical works, fire fighting , fire alarm alarm system, cabling and wiring for IT/ Networking,UPS, CCTV at all floors	D + 6 months	1.0%
6	Completion of SITC of VRV/VRF system, UPS, IT Components, external works i.e. hostel boundary wall fencing, gates, compound lights, approach road and external interface of services with internal services for making the hostel functional.	D + 7 months	1.0%
<p>Note:</p> <ol style="list-style-type: none"> 1. In the event of non-achieving the necessary progress as assessed from the running payment, above amount will be withheld for failure of each milestone subject to Maximum 5%. 			

SECTION-B

Conditions & Specifications of Civil and E&M Works

1.0 General Condition for Civil Works

- 1.1 The work in general shall be carried out in accordance with the CPWD Specifications (corrected upto the last date of submission / uploading of bid) hereinafter referred as CPWD Specifications.
- 1.2 Agency(s) shall provide permanent benchmarks, flag tops and other reference points for the proper execution of work and these shall be preserved till the end of the work. All such reference points shall be in relation to the levels and locations, given in the Architectural and plumbing drawings. On completion of work, the agency shall submit three prints of “as built” drawings to the Competent Authority along with the soft copy in CAD format.
- 1.3 The agency(s) should engage approved, licensed plumbers for the work and get the materials (fixtures/fittings) tested, by the municipal Body/Corporation authorities wherever required at his own cost. The agency(s) shall take approval of the Competent Authority of the plumbing agency proposed to be engaged by him.
- 1.4 The agency shall carry out the test run / performance run of the entire service installation(s) as per the specifications in the presence of the Competent Authority or his authorized representative before the work is finally accepted and nothing extra what-so-ever shall be payable to the agency for the test.
- 1.5 The work shall be carried out in accordance with the Architectural drawings and structural drawings approved by the Competent Authority.
- 1.6 Before commencement of any item of work the agency shall correlate all the relevant architectural and structural drawings and specifications etc. and satisfy himself that the information available is complete and unambiguous. The agency alone shall be responsible for any loss or damage occurring by the commencement of work based on any erroneous and or incomplete information and no claim whatsoever shall be entertained on this account.
- 1.7 The work of services will be executed simultaneously.
- 1.8 If the work is carried out in more than one shift or during night, no claim on this account shall be entertained. The agency must take permission from the institute authorities etc. if required for work during night hours, no claim/hindrance on this account shall be considered if work is not allowed during night time.
- 1.9 The agency shall be responsible for the watch and ward/guard of the buildings safety, fitting and fixtures provided by him against pilferage and breakage during the period of installations and thereafter till the building is physically handed over to the department. No extra payment shall be made on loss/theft if any.

- 1.10 Sample of the building materials, fittings and other articles required for execution of work shall be approved from the Competent Authority as per the approved make list for use in the work. The quality of samples brought by the agency shall be judged by standards laid down in the relevant CPWD/BIS specifications. All materials and articles brought by the agency to the site for use shall conform to the samples approved by the Competent Authority which shall be preserved till the completion of the work.
- 1.11 BIS marked materials except otherwise specified shall be subjected to quality test at the discretion of the Competent Authority besides testing of other materials as per the specifications described for the item/material. Wherever BIS marked materials are brought to the site of work, the agency shall, if required, by the Competent Authority, furnish manufacturer's test certificate or test certificate from approved testing laboratory to establish that the material/procured by the agency for incorporation in the work satisfies the provisions of specifications/BIS codes relevant to the material and/or the work done.
- 1.12 The agency shall procure the required materials in advance so that there is sufficient time for testing of the materials and clearance of the same before use in the work. The agency shall provide at his own cost suitable weighing and measuring arrangements at site for checking the weight/dimensions as may be necessary for execution of work.
- 1.13 Regarding testing of civil and electrical materials, the testing of materials shall be conducted in Govt. Laboratory/ Govt. Colleges/ IITs/NITs or from the laboratory approved by Competent Authority. The charges for testing of materials shall be borne by the agency.
- 1.14 Agency shall submit the "Quality Assurance Plan" within 15 days after award of work which shall be consisting of:
- 1.14.1 Required tests and frequency of components / products of proposed technology shall be as per national / international standards/CPWD norms as applicable for proposed technology and material being used.
- 1.14.2 Lot-size, number of required tests and frequency of testing. While deciding these criteria CPWD specifications and provisions of BIS Code and standard practices may be referred. Volume of work, practical difficulties and site conditions etc. may also be kept in view. The lot size, number of tests and frequencies of testing can be altered or modified by the Competent Authority from the prescribed limits. The decision of Engineer-in-charge will be final and binding in this regard.
- 1.14.3 It should clearly indicate the machinery and other tools and plants required to be deployed at site by the agency. Entire machinery and T&P may not be required at the start of work, therefore, a proper time schedule by which each machinery and T&P is to be brought at site should also be indicated.
- 1.14.4 Receipt of material, testing of the same and maintenance of register of tests, should be done by the agency.

1.14.5 All the registers of tests carried out at the construction site or source water testing in outside laboratories shall be maintained by the agency, which may be inspected by Competent Authority his/her designee at any point of time.

1.14.6 The agency shall allow access to Third Party Quality Assurance Agency (TPQAA) engaged by Competent Authority to have a control on quality and methodology of execution. At least 25% of samples of materials including cement concrete cubes shall be taken jointly by the agency and TPQAA / Competent Authority or his authorized representative. All arrangements for transporting and getting them tested shall be made by the agency.

1.14.7 All the tests in field lab setup at construction site shall be carried out by the Quality Control team to be engaged by the agency which can be witnessed by Competent Authority or his/her designee. A daily report of tests to be conducted on a day shall be submitted to the Competent Authority or his/her designee.

1.14.8 All the entries in the registers will be made by the designated engineering staff of the agency and got countersigned by the Competent Authority of his/her designee.

1.14.9 The agency shall be responsible for safe custody of all the test registers.

1.14.10 Submission of copy of all test registers, material at site register and hindrance register along with each alternate running account bill and final bill shall be mandatory.

1.15 Method Statement

1.15.1 The agency shall submit a 'Method statement' for each important activity for the approval of the Competent Authority soon after the award of work to him. The 'Method Statement' is a statement by which the construction works are formulated and stated in chronological order. The 'Method statement' should have a description of the item with elaborate procedures in steps to implement the same, the specifications of the materials involved, their testing and acceptance criteria, equipment to be used, precautions to be taken, steps of measurement, etc.

1.16 Check-list for Execution of work

1.16.1 As and when any important item is taken up for execution, the agency shall submit the specifications and develop a checklist and other relevant details. This sample checklist should be approved by the Competent Authority and used at site. This checklist should be shown to the Competent Authority or his/her designee during inspection. This procedure is not restricted to the proposed technology and its components but also to be followed for all hidden items, CC/RCC work, Steel-reinforcement, shuttering, cast-in-situ mosaic tile, doors & windows, plumbing including water supply and sewerage pipelines, roof treatment, earth filling etc.

1.16.2 The agency shall be responsible for documenting the total sequence of this project by way of photography, slides, audio-video recording etc. nothing extra shall be payable to the agency on this account.

1.16.3 General

The agency shall acquaint itself with the proposed site of work, its approach roads, working space available before quoting rates.

- i. No Entry/exit/ roads other than specified by the Competent Authority for the purpose of construction activities will be allowed to be used for construction activity purposes or movement of truck/lorries/load-carriers and nothing extra/delay whatsoever will be accounted for on this part.
- ii. No payment shall be made for any damage caused by rain, snowfall, flood or any other natural calamity, whatsoever during the execution of the work. The agency shall be fully responsible for any damage to the Institute . property and work for which the payment has been advanced to him under the contract and he shall make good the same at his risk and cost. The agency shall be fully responsible for safety and security of his material, T&P machinery brought to the site by him.
- iii. The agency shall ensure that no construction leachate (e.g. cement slurry etc.) is allowed to percolate into the ground. Adequate precautions are to be taken to safeguard against this including, reduction of wasteful curing processes, collection basic filtering and reuse. The agency shall follow requisite measures for collecting drainage water run-off from construction areas and material storage sites and diverting water flow away from such polluted areas. Temporary drainage channels, perimeter dike/swale etc. shall be constructed to carry the pollutant-laden water directly to the treatment device or facility.
- iv. The agency shall comply with the safety procedures, norms and guidelines (as applicable) as outlined in the document Part 7 Constructional Practices and Safety – 2016, National Building Code of India and Bureau of India Standards. A copy of all pertinent regulations and notices concerning accidents, injury and first-aid shall be prominently exhibited at the work site. Depending upon the scope and nature of work, a safety officer shall be available at work site to render and direct first-aid services. A telephone may be provided along with the telephone number of the hospital. Complete report of all accidents and action taken thereon shall be forwarded to the competent authorities.

1.16.4 The agency shall ensure the following activities for construction workers safety, among other measures:

- i. Guarding all parts of dangerous machinery.
- ii. Precautionary signs for working on machinery.

- iii. Maintaining hoists, lifting machines, chains, ropes and other lifting tackles in good condition during the defect liability period.
- iv. Ensuring that walking surfaces or boards at height are of sound construction and are provided with safety rails or belts.
- v. Provide personal protective equipments; helmets etc.
- vi. Provide measures to prevent fires. Fire extinguishers and buckets of sand to be provided in the fire-prone area and elsewhere.
- vii. Provide sufficient and suitable light for working during night time

1.16.5 The agency shall provide for adequate number of garbage bins around the construction site and the workers facilities and will be responsible for the proper utilization of these bins for any solid waste generated during the construction. The agency shall ensure that the site and the workers facilities are kept litter free. Separate bins should be provided for plastic, glass, metal, biological and paper waste and labeled in both Hindi and English with suitable symbols.

1.17 Conditions for environment protection

- 1.17.1 The agency shall not store/dump construction material or debris on the metalled road.
- 1.17.2 The agency shall get prior approval from Competent Authority for the area where the construction material or debris can be stored. Nothing extra shall be paid. This area shall not cause any obstruction to the free flow of traffic / inconvenience to the pedestrians. It should be ensured by the agency that no accidents occur because of such permissible storage.
- 1.17.3 The agency shall ensure that all the trucks or vehicles of any kind which are used for construction purposes / or are carrying construction material like cement, sand and other allied materials are fully covered. The agency shall take every necessary precaution that the vehicles are properly cleaned and dust free to ensure that enroute their destination, the dust, sand or any other particles are not release in air/contaminate air.
- 1.17.4 The agency shall provide mask to every worker working on the construction site and involved in loading, unloading and carriage of construction material and construction debris to prevent inhalation of dust particles.
- 1.17.5 The agency shall comply all the preventive and protective environment steps as stated in the MoEF guidelines 2010 and / or any other guidelines issued later on.
- 1.17.6 The agency shall carry out on-road inspection for black smoke generating machinery. The agency shall use cleaner fuel.
- 1.17.7 The agency shall ensure that all DG set comply emission norms notified by MoEF.

- 1.17.8 The agency shall use vehicles having valid pollution under control certificate. The emissions can be reduced by a large extent by reducing the speed of a vehicle to 20Kmph. Speed bumps shall be used to ensure speed reduction. In case where speed reduction cannot effectively reduce fugitive dust, the agency shall divert traffic to nearby paved areas.
- 1.17.9 The agency shall ensure that the construction material is covered by tarpaulin. The agency shall take all other precaution to ensure that no dust particles are permitted to pollute air quality because of such storage.
- 1.17.10 The paving of the path for plying of vehicles carrying construction material is more permanent solution to dust control and suitable for longer duration projects.
- 1.17.11 It is mandatory to use of wet jet in grinding and stone cutting.
- 1.17.12 The agency shall take appropriate protection measures line raising wind breakers of appropriate height on all sides of the plot/area using CGI sheets or plastic and / or other similar material to ensure that no construction material dust fly outside the plot area.
- 1.17.13 Any violation of orders of MoEF including guidelines of State Government or any officer of any department shall lead to stoppage of work for which agency shall be responsible and no hindrance shall be accounted in this regard.

1.18 Miscellaneous

- 1.18.1 Agency shall arrange water for construction from its own sources within the ambit of laws and guidelines issued by the Competent Authority in this regard. Efforts should also be made by selected agency for using recycled water for construction. The quality of water will be tested on monthly basis and should comply with IS standards.
- 1.18.2 Power charges shall be recovered as per the latest PSPCL commercial rates applicable from the bills , if provided by the Institute. .

2.0 SPECIFICATIONS FOR CIVIL WORKS

- 2.1 The broad specifications of shortlisted technologies to be used for construction of Hostel are mentioned need to be followed. As regards procurement and use of cement, steel reinforcement, design mix concrete from batching plant/ RMC plant etc. and any other required material shall be as per applicable CPWD specifications, relevant India Standards and this RFP.

2.2 Waterproofing

- 2.2.1 The work shall be got executed from the specialized agency as approved by the Competent Authority.

- 2.2.2 Agency shall also submit the names of water proofing specialist along with information about their technical capabilities and list of similar works executed by the specialized agency in the past for the approval of Competent Authority within 30 days from the date of award of work who have executed satisfactorily a minimum of three works of value not less than 40% of total work of water proofing to be executed each or two works of value not less than 60% of total work of water proofing to be executed each or one work of value not less than 80% of total work of water proofing to be executed in the last seven years.
- 2.2.3 Total quantity of the water proofing compound required shall be arranged only after obtaining the prior approval of the make by Competent Authority in writing. Materials shall be kept under double lock and key and proper account of the water proofing compound used in the work shall be maintained. It shall be ensured that the consumption of the compound is as per specified requirements.
- 2.2.4 The finished surface after water proofing treatment shall have adequate smooth slope as per the direction of the Competent Authority.
- 2.2.5 Before commencement of treatment on any surface, it shall be ensured that the outlet drain pipes / spouts have been fixed and the spout openings have been eased and rounded off properly for easy flow of water.
- 2.2.6 The approved specialized agency for the work of water proofing will have to execute a guarantee bond in prescribed Proforma enclosed below for removing any defects for at least 10 years. Guarantee bond shall be signed by both the specialized agencies as approved by the Competent Authority and the agency to meet their liability under the guarantee bond. however, the sole responsibility about the efficiency of water proofing treatment shall rest with the agency.
- 2.2.7 10 % of the cost of water proofing work shall be retained as additional security deposit and the amount so withheld would be released after ten years from the date of completion of the entire work under the agreement. If the performance of the work done is found unsatisfactory and any defects noticed during the guarantee period, they shall be rectified by the agency within seven days of receipt of intimation of defects in the work. If the defects pointed out are not attended to within the specified period, the same will be got done from another agency at the risk and cost of the agency.

3.0 General scope & Specifications of E&M works

3.1 Scope of work

- 3.1.1 Scope of work covers planning, designing, supply, installation, testing and commissioning of all E&M services such as IEI, Fire Fighting, Fire Alarm required to be provided in the said scheme as per norms of various IS codes/ CBC 2016/ CPWD specifications, various bye laws and norms. The work shall be executed as per scope and specifications of E&M works given hereafter and given in respective head / part of the scheme sub-head. If any services required to make the building /scheme habitable are not covered in the scope of services same shall be presumed that the same shall be provided within the quoted cost and nothing extra shall be paid on this account.
- 3.1.2 The scope of works also covers the preparation of layout plans, drawings for E&M scheme and approval of the same from the respective authority etc. before the commencement of work. During execution, if require a modification, the same shall be executed without any extra cost. Finally, after execution, approvals/NOCs/Clearance shall be the responsibility of a successful agency for which nothing extra is payable in case any modification / extra work is required. All statutory fees / charges required for obtaining clearance from CEA shall be paid by the agency.

4.0 General

- 4.1 These additional terms and conditions are applicable to all the E&M works.
- 4.1.1 The agency shall submit within 15 days after award of work an undertaking from the Original equipment Manufacturers (OEMs) for specialized E&M works regarding:
- A) Warranty/guarantee cards for all equipments needs to be handed over to IIT Ropar on completion of work.
- 4.1.2 The agency must study specifications and conditions carefully. The work shall be executed in close coordination with the progress of building work.
- 4.1.3 The work shall be carried out as per CPWD specifications, if specifications are not available, IS codes shall be followed.
- 4.1.4 All equipment shall be delivered with (i) manufacturer's test certificate, (ii) manufacturer's technical catalogues, and installation / instruction (O&M) manuals.
- 4.1.5 Scaffolding & any other T&P required for execution of work shall be arranged by the agencies and nothing extra shall be payable on that account.

4.1.6 The layout plans/ drawing/other documents pertaining to E&M services shall have to be submitted for evaluation & approval within 15 days of award of work.

5.0 Inspection before Dispatch

All routine tests shall be conducted before dispatch of equipments. No equipment shall be dispatched from the manufacturer's premises without such tests being conducted and test result recorded. These test certificates shall be given along with the supply of equipments. The Engineer in-charge shall, if he so desires inspect and witness the pre-delivery tests. For his purpose, the agency shall give 15 days notice. Agency shall arrange for inspection by the department. Department shall bear expenses of its officials for inspection as far as traveling, boarding and lodging is concerned. However, waiver if any, for inspection shall be at the discretion of the department without any cost implication but ROUTINE TEST and TYPE TEST certificates shall have to be submitted for equipments.

Prior to dispatch, all equipments shall be adequately protected and insured for the whole period of transit, storage and erection against corrosion and incidental damages etc. from the effect of vermin, sunlight, rain, heat and humid climate.

6.0 Insurance

The agency shall include storage cum erection insurance including third party insurance right from the storage to commissioning of various equipments. All insurance which the agency is required to enter under the contract shall be affected with any authorized general insurance company and the agency shall produce the policies of insurance.

7.0 Remedy of failure to insure

If the agency fails to effect and keep in force the insurance referred to in the preceding sub-clause the department may affect and keep in force any such insurance and pay such premium as may be necessary for that purpose and from time to time deduct the amount, so paid by the department, from any money due or which may become due to bids or recover the same as debit from the agency's bill.

8.0 Quality of material and workmanship

All parts of the equipment shall be of such design, size and material to function satisfactorily under all rated of operation. All components of the equipment shall have adequate factor of safety. The work of fabrication and assembly shall conform to sound engineering practice and based on "Fail Safe Design". The mechanical parts subject to wear and tear shall be easily replaceable type. The construction of the equipment shall be such as to facilitate effortless

operation, inspection, maintenance and repairs. All connections and contracts shall be designed to minimize risk of accidental short circuits caused by animals, birds and vermin etc. All identical items and their component parts should be completely, interchangeable including spare parts.

9.0 Inspection and testing at site

- 9.1 The installation shall be subject to necessary inspection during every stage of erection, by the Competent Authority. The successful agency shall provide all facilities and assistance for the purpose.
- 9.2 The completed installation shall be inspected and tested by the Competent Authority in the manner as will be laid down by him, in consultation with the agency.
- 9.3 All instruments and facilities necessary for the tests shall be provided by the agency.

10.0 Completeness of work

- 10.1 The installation shall be completed in all respects and put in to operation even even where certain details have not been mentioned / left out in these specifications.
- 10.2 All E&M services such as Internal electrical installations, fire fighting system and addressable fire alarm system shall be declared as completed after completion of trial run of 1 month.

11.0 Internal electrical installation (IEI)

- 11.1 The work will be carried out as per proposed technology specifications for the internal electric installation. Where such specifications are not available, CPWD specifications shall be adopted.
- 11.2 FRLS PVC insulated Copper conductor wires will be used for points, circuit & sub-main wiring as per CPWD norms.
- 11.3 Agency shall execute the work as per scale of amenities given elsewhere in the document after obtaining necessary approval of the layout for internal electrification of all houses, common areas and staircase from Competent Authority. The staircase lighting shall be in a group control system.
- 11.4 Modular type switches, socket and stepped type electronic BLDC fans with regulators, bell push along with matching mounting boxes of same make shall be used.
- 11.5 TV outlet point wiring of each common room shall be terminated in suitable size of GI box along with splitter at every floor. The interconnections of all splitter boxes fixed at all floors shall be done properly with conduits to form proper distribution system with the prior approval of competent authority.
- 11.6 Suitable rain protection covers made of 16 SWG galvanized MS sheet wherever required shall be provided.

- 11.7 Meter Boards & Main distribution boards as per DISCOM specification / requirement shall also be provided by the agency. Dwelling units shall be provided with single phase 230 V supply.
- 11.8 Energy monitoring system needs to be installed at the ground floor of hostel premises.
- 11.9 Separate shaft for each block of hostel shall be provided for laying of electrical, mechanical and fire services. HDPE/DWC pipes for taking L.T. cables up to meter boards in the meter rooms along with brick masonry chambers of suitable size shall be provided by the agency wherever required.
- 11.10 Laying of HDPE /DWC /Hume pipes for road crossing or in pucca portion and CC path etc. for electric/street lighting cables complete with adequate number of cable chambers shall be provided by the agency.
- 11.11 After completing the work, necessary test results as envisaged in CPWD General Specifications Part-I (Internal)-2005 & Indian Electricity Rules 2005, shall be recorded and submitted to IIT Ropar. The results shall be within the permissible limits.
- 11.12 Lighting arresters as per IS:2309-1989 as amended upto date shall also be provided by successful agency.

12.0 Fire fightings and fire alarm system

Fire protection system shall be designed and provided as per NBC 2016 with Amendments, Updated BIS Codes and Fire Bye Laws.

SPECIFICATION OF DEVELOPMENT WORKS:

Specifications to be adopted for On-site Infrastructure Work

ROADS

- a. Internal Roads: The internal roads feeding the houses will be of 100mm thick RCC of not less than M25 grade over a base course of PCC not less than M7.5 grade (100mm thick).
- b. Peripheral Roads and pathways (as shown in drawing): “Providing and laying factory made chamfered edge Rubber Molded concrete coloured paver blocks of required strength, thickness & size / sharpe, made by table vibratory method, to attain superior smooth finish using PU or equivalent moulds, laid in required mix of colour & pattern over 50mm thick compacted bed of coarse sand, comparing and proper embedding / laying of inter locking paver blocks into the sand bedding layer through vibratory compaction by using plate vibrator, filling the joints with fine sand and cutting of paver blocks as per required size and pattern, finishing and sweeping extra sand in footpath, lawns, drive ways or light traffic parking etc. all complete as per manufacturer’s specifications & direction of Competent Authority: 80mm thick C.C. paver block of M-30 grade with approved color design”.

The peripheral road, pathways and internal roads should be as per the CPWD specifications.

WATER SUPPLY

50mm dia ductile iron pipe or GI pipe with bitumastic paint ... 6 kgf/cm² UPVC including all required fitting etc. as required including connection with existing line.

SEWERAGE SYSTEM

150mm dia PVC pipe as per IS:14333 and IS:10910 of [sq.cm](#) with required manhole etc. to be provided.

EXTERNAL ELECTRIFICATION WORK

Electric Panel: As necessary for the layout feeder Pillar Floor mounting totally enclosed compartmentalized cubical, dust vermin proof and outdoor type with required Earthing plate and bus bar complete including connection etc.

- Providing and laying require electrical cable for providing electrical supply to units, as approved.
- Providing and fixing street LED lights as required including fixture and ESL, as per CPWD specifications.
- making required connections to hostels.
- P/Laying XLPE insulated / PVC sheathed cable of 1.1 KV grade with aluminum conductor armoured of IS:7098-I/1554-1 approved make in ground as per IS:1255 including excavation of

30cm x 75cm size trench, 25cm thick under layer of sand, 2nd class bricks covering, refilling earth, compaction of earth, making necessary connection, testing etc. as required of size.

- a. 35.0 sqmm 3.5 core
- b. 6.0 sqmm 2 core
- c. 4.0 sqmm 2 core

BOUNDARY WALL with barbed wire fencing , design of Raavi hostel to be followed.

EXTERNAL DEVELOPMENT WORKS

A. SPECIFICATIONS FOR WATER SUPPLY:

- 1. Scope:** It includes excavation for pipes, laying of Ductile Iron pipes K-9 with necessary fittings, sluice valves, fire hydrants, air valves with necessary brick chambers, jointing of pipe and fittings, accessories, refilling of trenches and testing for leakage disinfection etc. complete to the satisfaction of Competent Authority as per approved scheme in the specified boundary / area.
- 2.** The water line system shall be laid as per the scheme approved by local authority. The sluice valves, hydrants and air valves shall be IS marked. Any modification in this scheme approved by the Competent Authority shall not violate terms of contract. The work shall be executed as per latest CPWD specifications with upto date correction slips and the relevant IS Codes shall be followed.
- 3. Excavation:** The work includes excavation in all types of strata. For proper jointing of pipes and fittings the bottom of the trench and sides at the relevant places should be sufficient for doing proper lead sulking of joints. The top of the pipes would have at least cushion of 60cm from the finished surface under road berms and 1.2m under roads or as per direction of Competent Authority.
- 4.** Ductile Iron pipes K-9 pipes duly approved by the Competent Authority shall be used in the work. All collar jointed / flanged/ socketed fittings shall be of heavy class.
- 5. Laying:** The Ductile Iron pipes K-9 shall be laid as per alignment shown in the approved drawings. In case it is considered necessary by the Competent Authority to alter the alignment as per site situations, so as to accommodate laying of other services viz. storm water drain, sewerage, and electric cables, no extra claims for the same would be entertained. While laying the pipes, it may be ensured that these water supply pipes have a horizontal and vertical separation of 3 meters and 0.5 meter respectively from the sewer pipes. The water line should in no case run below sewer line.
- 6. Jointing:** Water supply pipes, fittings and specials shall be jointed together with pig lead or flanged joints where necessary as per direction of Competent Authority. The pig lead brought at site shall be got tested from laboratory and only after the results are found to be satisfactory the same would be allowed to be used in the work and shall remain in joint custody. The day to day consumption of lead shall be maintained by the Junior Competent Authority and the same would be signed by the

agency as well. The quantity of lead to be used in joints of pipes, fittings and specials would be as per CPWD Specifications / IS Codes.

7. **Chambers:** Suitable fly ash brick chambers for housing the fire hydrants and sluice valves shall be constructed in brick masonry with bricks of class designation 75 in CM 1:5. The brick chambers shall have leveling course of CC 1:5:10, the chamber shall be plastered with chambers shall have RCC slab on top with required opening for operation of valves as per MS specifications, indicating plate showing the positions of fire hydrants, and sluice valves also be provided.
8. Cement concrete 1:2:4, thrusts blocks shall be provided as per CPWD specifications for the various fittings / accessories.
9. **Disinfection / Testing:** After the work has been completed the lines shall be flushed with water containing bleaching powder @ 0.5gms/litre of water and cleaned with fresh water and the operation repeated 3 times till the sample of water is approved by Municipal Laboratory.
Pipes laid shall be tested at twice the maximum allowable pressure to check water tightness of the joints and to detect any hair cracks in the pipes. After satisfactory completion of the work, 5 sets of completion plans, showing the alignment of lines, location of air valves, sluice valves, fire hydrants along with.
10. The work may be inspected by officials of local municipal / statutory authority or any other agency designated by IIT Ropar during execution.
11. The work shall be executed as per approval accorded by local authority and the design and drawings by Competent Authority, shall be final and binding on the agency and will not be open to questions.

B. SPECIFICATIONS FOR SEWERAGE:

The work shall be executed as per approval accorded by local authority and the design and drawings by Competent Authority shall be final and binding on the agency and will not be open to questions. This work shall include excavation in all states, laying stone ware, RCC, NP2/NP3, S&S pipes, construction of manholes, providing SFRC manhole covers, frames, heavy duty, foot rests with necessary brick work in cement mortar, plaster, bed concrete and concrete upto haunches and around the pipes wherever required.

GENERAL:

1. Circular Manholes:
 - a) Manholes shall be provided:
 - i) At starting point of each line
 - ii) At all change points, (Gradient, size of the pipe, alignment)
 - iii) At all junction points of two or more lines. Manholes should be so spaced that each

properly discharged in the direction of flow, and maximum centre to centre spacing of manholes will be as per prevailing Bye-laws.

2. Sizes of manholes:

S. No.	For depth of manhole between	Bottom diameter of manhole
1.	0.914m to 1.68m (3'-0" to 5'-6")	0.914 m (3'- 0")
2.	1.68m ro 2.28m (5'-6" to 7'- 6")	1.220 m (4'- 0")
3.	Beyond 2.28m (3'- 0" to 5'- 6")	1.520 m (5'- 0")

c) For depth less than 0.914m, rectangular manholes of size 90x80 cm shall be provided.

3. The circular manholes shall be of minimum depth of 0.914m.
4. The depth of the manhole shall be taken as vertical distance between top level of SFRC cover and invert level of channel in the manhole. The work includes excavation in all types of soils for construction of manholes with orange colour safety foot rest of minimum 6mm thick plastic encapsulated as per IS:10910.
5. All manholes to be plastered both inside and outside with cement mortar 1:4 (1 cement: 4 coarse sand) with a floating coat of neat cement inside.
6. When sewer is being laid under sub-soil water 15cm thick stone soiling shall be provided under concrete bedding and 23cm thick under manholes.
7. Heavy duty SFRC manhole frames and covers 560mm internal dia will be provided weighing 182 kg and to be tested as per IS:1726 (Part-1) for heavy duty loads. The covers shall be embossed with its year of manufacture and work 'SEWER and IS mark'.
8. Drop connection: Normally, no sewer line shall have a drop of more than 0.610 mtr. in any case. Wherever, the drop is more, a drop connection arrangement shall be provided as per sketch in CPWD Specification 1996, with amendments till date.
9. Pipes: Laying of sewerage lines shall include excavation in all types of soils, providing and laying of RCC, S&S pipes, NP2/NP3 as specified with rubber ring joints, testing and refilling etc. the completion of job to the satisfaction of Competent Authority and according to the specifications prescribed.
 - i. The S&S, RCC NP2/NP3 pipes as per requirement / approved scheme IS marked will be used, with rubber ring and cement mortar joints.

- ii. Pipes laid at a depth less than 0.910m under road berms and green belts, and more than 4.57m shall be encased with 1:4:8 (1 cement: 4 fine sand: 8 graded stone agg. 40mm nominal size) cement concrete 15cm thick on all sides including under the pipes.
- iii. Extra excavation of at least 0.23m width in each side will be done for proper jointing of pipes at the location of sockets.
- iv. No sewer line shall be laid within a distance of 3.25m from building line - in case of roads. In case of service lanes / roads the sewer lines shall be laid at centre of the lanes.
- v. The minimum size of pipe to be used shall be as per approved scheme.
- vi. In case the pipe are laid under sub-soil water level, the encasement shall be done with 1:3:6 (1 cement: 3 coarse sand: 6 graded stone agg. 40mm nominal size) instead of CC 1:4:8.
- vii. In other cases 0.15m bed encasement with 1:4:8 (1 cement: 4 fine sand: 8 graded stone stone agg. 40mm nominal size) cement concrete up to haunches of pipes shall be provided, the stone ballast shall be of 40mm nominal size for bed concrete and 20mm nominal size for around encasement of pipe. Where cushion is less than 0.90m around encasement of pipe with same mix will be done.
- viii. Where the invert level of the manhole is 1.22m or more below the subsoil water level, 0.115m thick core of CC 1:2:4 (1 cement: 2 coarse sand: 4 raised stone ballast 20mm nominal size) shall be provided in the walls of the manholes upto 0.61m above sub-soil water level in order to prevent in-filtration of sub-soil water level, from the sides of the manhole shall be provided with 15cm thick 1:2:4 (1 cement: 2 coarse sand: 4 stone agg. 20mm nominal size) RCC slab, monolithically with the core of the wall of the manhole lean concrete of 1:5:10 (1 cement: 5 fine sand: 10 graded stone agg. 40mm nominal size) of 0.075m thick shall be provided under the slab.

10. Tests: The sewer line laid will be subject of following three tests;

- a) Smoke test: To check the air tightness of joints.
- b) Mirror test: To check the straight alignment of pipes.
- c) Disc test: To see that lines are free of dead / set concrete / mortar / other blockage and lines laid are in straight line from manhole to manhole.

11. Any other tests, if required during course of execution will be decided by the Competent Authority and will be binding on the agency.

NOTE: Nothing extra is to be paid to the agency for testing of pipes etc.

12. The agency will submit to Competent Authority adequate sets of completion plan of sewerage system laid showing position of manholes with its centre distance dia. of lines, gradients, location of drop connections, connecting point with ground levels and invert levels at each point within 10 days of completion of the sewerage work. The service plan (in original) approved by the local body along with their forwarding letter be also submitted to the Competent Authority.

13. The following stops shall be maintained while laying the pipes:

S. No.	Dia. of pipe	Slope
1.	250mm	1 in 190
2.	300mm	1 in 245
3.	350mm	1 in 300
4.	400mm	1 in 360
5.	450mm	1 in 510
6.	500mm	1 in 590

14. Crossing over nallahs shall be done by C.I. pipe with necessary support.

15. The conditions mentioned in the approved scheme of local authority shall be followed strictly.

C. SPECIFICATIONS FOR STORM WATER DRAINAGE:

C/o storm water drainage shall include excavating in all types of soils, providing and laying brick work with FPS bricks of CD-75 in CM 1:4 (1 cement: 4 coarse sand). Plastering of inside and top of both walls of drain shall be in CM 1:3 (1 cement: 3 fine sand) with floating coat of neat cement and outside plastering 6" in depth both side, CC 1:5:10 (with coarse sand) in bottom & CC 1:2:4 in channel of drain then covering of all drains with SFRC cover of design mix M-25.

Following specifications will be used for providing underground pipe drainage in the complex.

1. The work will be executed as per the design and layout approved by the Institute .
2. FPS bricks of CD-75 shall be used.
3. minimum width of the drains shall be 230mm or as per CPWD specifications.
4. SFRC covers of design mix M-25 shall be provided on all the drains.
5. Any other details, if required during course of excavation will be decided by the Competent Authority and will be binding on the agency.

D. SPECIFICATIONS FOR ROADS, PARKING & PATHWAYS

1. Construction of internal approach roads and parkings will be done as per layout plan and standard laid down by local municipal authority. The agency will ensure that roads are developed to the full right of way. The required metalled width will be provided to the exact crust thickness as per norms. The agency will ensure that nowhere the right of way of roads reduces. The roads will be laid to camber longitudinal as well as cross - section wise.

The job of construction of roads consists of preparation of sub-grade, consolidation of the same, filling and compacting the earth work in embankment under optimum moisture conditions to give at least 95% of the maximum dry density (proctor density), supplying locally available stone and screening of blue texture of the required laying of base and sub-base courses using binding and blinding material and necessary rolling as per specifications brick on edge and pre-mixing etc. The surface dressing of the berms of roads will be done areas to the storm water pipe drainage. MORTH guidelines will be followed in case of any omissions.

2. Surface dressing of the berms with slope towards drainage system.
3. CC 1:2:4 (1 cement: 2 coarse sand: 4 graded stone agg. 20mm nominal size) pre-cast kerb stone fair face finish in uniform colour, of 0.30m long and 0.20m section as per CPWD specification / direction of Competent Authority jointed with the mix 1:2 (1 cement: 2 fine sand) to be provided as per architectural drawings.
4. Toe walls in brick masonry with bricks of class designation 75 in cement mix 1:4 for pavements / footpaths wherever necessary.
5. RCC NP2 S&S pipe joints in rubber rings and cement mortar 1:2 (1 cement: 2 fine sand) for cross drainage with fully chambers of size 50x45x60cms with MS grating of size 500x450mm wherever necessary as per decision of the Competent Authority.
6. Any other details that crop up depending upon site conditions will be decided by the Competent Authority will be binding on the agencies.
7. The specifications of CC pavement / footpath shall be as under:
 - a) 100mm thick CC 1:5:10 (1 cement: 5 fine sand: 10 graded stone agg. 40mm nominal size)
 - b) 100mm thick CC 1:2:4 (1 cement: 2 coarse sand: 4 graded stone agg. 20mm nominal size) over under layer of CC 1:5:10 as per para á'above.
 - c) Toe wall brick masonry with FPS bricks of class designation 75 in cement mortar 1:4 (1 cement: 4 coarse sand) to retain the edge of the paving.
8. The work will be done as per CPWD specifications 2009 Vol. I & II with upto date corrections. Any other width of road as per approved development plan shall be as per prevailing norms.

9. The agency shall submit to the Competent Authority, adequate sets of completion plants for roads, paths after its completion showing right of way of each road / path and their respective cross section within 10 days of completion of road / path work.

SECTION-C

PAYMENT - SCHEDULE

- 1.0 All running / intermediate and final payments shall be made to the agency in accordance with the following schedule:
- 2.0 The basis of payment on “Pro rates basis” shall be worked out on the percentage of work done out of total scope of work.

S. No	Activity	% Payable
1.	Investigation, Planning, Design and Drawings, Detailed Survey, Architectural drawings, Structural Drawings, MEP Services drawings, ready for submission for approval	
1A	On submission and approval of submission of Design and Drawings for civil, electrical, plumbing, fire fighting, VRV/VRF, networking, sanitary, including integration drawing showing connections of the hostel services with the existing services from functional perspective, and submitting drawings to IIT Ropar.	
1B	On submission and approval of vetted structural design from any IIT,	
	On completion of above	3.5%
2.	On completion of following:	
2A	On Completion of excavation work, laying of foundation and upto plinth level of hostels	15%
2B	On Completion of Super structure structural skeleton of external walls, slabs and other structural members and staircase well, roof slab etc. of hostels	25%
2C	On completion of Internal work of hostels with all civil including flooring and skirting dado work, electrical, mechanical services, plumbing.	10%
2D	On completion of Finishing of Doors, Windows including all fittings and painting etc.	2.5%
2E	On completion of Internal finishing and painting inside hostels	2.5%
2F	On completion of External finishing and painting outside hostels	2.5%
2G	On completion of Over head tanks or provision for supply, china-ware and sanitary fitting including testing etc.	2.5%

2H	On completion of Electrical installation including external electrification, installation of distribution boards, laying off cables, installation of electric sub-station and other associated electrical works etc.	2.5%
3	On completion of Supply, Installation, testing and commissioning of VRV/VRF System and making it functional.	2%
4	On completion of Supply, installation, testing and commissioning of the Fire Fighting System and making it functional.	2%
5	On completion of External interface outside hostels buildings, including making connections for water supply, sewerage with the existing pipelines for STP, inspection chambers, electricity lines, storm water drainage, solid waste management, and other associated work etc. for making the hostels fully functional.	15%
6	On completion of Site Development works including pathways, approach for hostel, interface of MEP services, construction of boundary wall fencing, installation of gates, internal roads, numbering of hostel rooms, other amenities etc.	5%
7	On recording of completion certificate and submission of as built drawings of civil, electrical, plumbing, firefighting, VRV/VRF, networking, interface with external services etc. all complete in 03 hard and soft copies.	5%
8	On successful completion of three years Defect Liability Period.	5%

INTEGRITY AGREEMENT

This Integrity Agreement is made at on this day of 20.....

BETWEEN

IIT ROPAR represented through its Registrar, (Hereinafter referred as the ‘Principal/ Owner’, which expression shall unless repugnant to the meaning or context hereof include its successors and permitted assigns)

AND

..... (Name and Address of the Individual/ firm/ Company) through (Hereinafter referred to as the (Details of duly authorized signatory) “Bidder/Contractor” and which expression shall unless repugnant to the meaning or context here of include its successors and permitted assigns)

Preamble

WHEREAS the Principal / Owner has floated the Tender (NIT No.)(hereinafter referred to as “Tender/Bid”) and intends to award, under laid down organizational procedure, contract for(Name of work) hereinafter referred to as the “Contract”.

AND WHEREAS the Principal/Owner values full compliance with all relevant laws of the land, rules, regulations, economic use of resources and of fairness/transparency in its relation with its Bidder(s) and Contractor(s).

AND WHEREAS to meet the purpose aforesaid both the parties have agreed to enter into this Integrity Agreement (hereinafter referred to as “Integrity Pact” or “Pact”), the terms and conditions of which shall also be read as integral part and parcel of the Tender/Bid documents and Contract between the parties.

NOW, THEREFORE, in consideration of mutual covenants contained in this Pact, the parties hereby agree as follows and this Pact witnesses as under:

Article 1: Commitment of the Principal/Owner

1) The Principal/Owner commits itself to take all measures necessary to prevent corruption and to observe the following principles:

- (a) No employee of the Principal/Owner, personally or through any of his/her family members, will in connection with the Tender, or the execution of the Contract, demand, take a promise for or accept, for self or third person, any material or immaterial benefit which the person is not legally entitled to.

- (b) The Principal/Owner will, during the Tender process, treat all Bidder(s) with equity and reason. The Principal/Owner will, in particular, before and during the Tender process, provide to all Bidder(s) the same information and will not provide to any Bidder(s) confidential / additional information through which the Bidder(s) could obtain an advantage in relation to the Tender process or the Contract execution.
- (c) The Principal/Owner shall endeavour to exclude from the Tender process any person, whose conduct in the past has been of biased nature.

2) If the Principal/Owner obtains information on the conduct of any of its employees which is a criminal offence under the Indian Penal code (IPC)/Prevention of Corruption Act, 1988 (PC Act) or is in violation of the principles herein mentioned or if there be a substantive suspicion in this regard, the Principal/Owner will inform the Chief Vigilance Officer and in addition can also initiate disciplinary actions as per its internal laid down policies and procedures.

Article 2: Commitment of the Bidder(s)/Contractor(s)

- 1) It is required that each Bidder/Contractor (including their respective officers, employees and agents) adhere to the highest ethical standards, and report to the Government / Department all suspected acts of fraud or corruption or Coercion or Collusion of which it has knowledge or becomes aware, during the tendering process and throughout the negotiation or award of a contract.
- 2) The Bidder(s)/Contractor(s) commit himself to take all measures necessary to prevent corruption. He commits himself to observe the following principles during his participation in the Tender process and during the Contract execution:
 - a) The Bidder(s)/Contractor(s) will not, directly or through any other person or firm, offer, promise or give to any of the Principal/Owner's employees involved in the Tender process or execution of the Contract or to any third person any material or other benefit which he/she is not legally entitled to, in order to obtain in exchange any advantage of any kind whatsoever during the Tender process or during the execution of the Contract.
 - b) The Bidder(s)/Contractor(s) will not enter with other Bidder(s) into any undisclosed agreement or understanding, whether formal or informal. This applies in particular to prices, specifications, certifications, subsidiary contracts, submission or non-submission of bids or any other actions to restrict competitiveness or to cartelize in the bidding process.

- c) The Bidder(s)/Contractor(s) will not commit any offence under the relevant IPC/PC Act. Further the Bidder(s)/Contract(s) will not use improperly, (for the purpose of competition or personal gain), or pass on to others, any information or documents provided by the Principal/Owner as part of the business relationship, regarding plans, technical proposals and business details, including information contained or transmitted electronically.
 - d) The Bidder(s)/Contractor(s) of foreign origin shall disclose the names and addresses of agents/representatives in India, if any. Similarly Bidder(s)/Contractor(s) of Indian Nationality shall disclose names and addresses of foreign agents/representatives, if any. Either the Indian agent on behalf of the foreign principal or the foreign principal directly could bid in a tender but not both. Further, in cases where an agent participate in a tender on behalf of one manufacturer, he shall not be allowed to quote on behalf of another manufacturer along with the first manufacturer in a Subsequent/parallel tender for the same item.
 - e) The Bidder(s)/Contractor(s) will, when presenting his bid, disclose any and all payments he has made, is committed to or intends to make to agents, brokers or any other intermediaries in connection with the award of the Contract.
- 3) The Bidder(s)/Contractor(s) will not instigate third persons to commit offences outlined above or be an accessory to such offences.
- 4) The Bidder(s)/Contractor(s) will not, directly or through any other person or firm indulge in fraudulent practice means a willful misrepresentation or omission of facts or submission of fake/ forged documents in order to induce public official to act in reliance thereof, with the purpose of obtaining unjust advantage by or causing damage to justified interest of others and/or to influence the procurement process to the detriment of the Government interests.
- 5) The Bidder(s)/Contractor(s) will not, directly or through any other person or firm use Coercive Practices (means the act of obtaining something, compelling an action or influencing a decision through intimidation, threat or the use of force directly or indirectly, where potential or actual injury may befall upon a person, his/ her reputation or property to influence their participation in the tendering process).

Article 3: Consequences of Breach

Without prejudice to any rights that may be available to the Principal/Owner under law or the Contract or its established policies and laid down procedures, the Principal/Owner shall have the following rights in case of breach of this Integrity Pact by the Bidder(s)/Contractor(s) and the Bidder/ Contractor accepts and undertakes to respect and uphold the Principal/Owner's absolute right:

1. If the Bidder(s)/Contractor(s), either before award or during execution of Contract has committed a transgression through a violation of Article 2 above or in any other form, such as to put his reliability or credibility in question, the Principal/Owner after giving 14 days notice to the contractor shall have powers to disqualify the Bidder(s)/Contractor(s) from the Tender process or terminate/ determine the Contract, if already executed or exclude the Bidder/Contractor from future contract award processes. The imposition and duration of the exclusion will be determined by the severity of transgression and determined by the Principal/Owner. Such exclusion may be forever or for a limited period as decided by the Principal/Owner.
2. Forfeiture of EMD/ Guarantee/ Security Deposit: If the Principal/ Owner has disqualified the Bidder(s) from the Tender process prior to the award of the Contract or terminated/determined the Contract or has accrued the right to terminate/determine the Contract according to Article 3(1), the Principal/Owner apart from exercising any legal rights that may have accrued to the Principal/Owner, may in its considered opinion forfeit the entire amount of Earnest Money Deposit, Performance Guarantee and Security Deposit of the Bidder/ Contractor.
3. Criminal Liability: If the Principal/Owner obtains knowledge of conduct of a Bidder or Contractor, or of an employee or a representative or an associate of a Bidder or Contractor which constitutes corruption within the meaning of IPC Act, or if the Principal/Owner has substantive suspicion in this regard, the Principal/ Owner will inform the same to law enforcing agencies for further investigation.

Article 4: Previous Transgression

- 1) The Bidder declares that no previous transgressions occurred in the last 5 years with any other Company in any country conforming to the anti corruption approach or with Central Government or State Government or any other Central/State Public Sector Enterprises in India that could justify his exclusion from the Tender process.
- 2) If the Bidder makes incorrect statements on this subject, he can be disqualified from the Tender process or action can be taken for banning of business dealings/ holiday listing of the Bidder/Contractor as deemed fit by the Principal/ Owner.
- 3) If the Bidder/Contractor can prove that he has resorted / recouped the damage caused by him and has installed a suitable corruption prevention system, the Principal/Owner may, at its own discretion, revoke the exclusion prematurely.

Article 5: Equal Treatment of all Bidders/Contractors/Subcontractors

- 1) The Bidder(s)/Contractor(s) undertake(s) to demand from all subcontractors a commitment in conformity with this Integrity Pact. The Bidder/Contractor shall be responsible for any violation(s) of the principles laid down in this agreement/Pact by any of its Subcontractors/sub-vendors.
- 2) The Principal/Owner will enter into Pacts on identical terms as this one with all Bidders and Contractors.
- 3) The Principal/Owner will disqualify Bidders, who do not submit, the duly signed Pact between the Principal/Owner and the bidder, along with the Tender or violate its provisions at any stage of the Tender process, from the Tender process.

Article 6- Duration of the Pact

This Pact begins when both the parties have legally signed it. It expires for the Contractor/Vendor 12 months after the completion of work under the contract or till the continuation of defect liability period, whichever is more and for all other bidders, till the Contract has been awarded.

If any claim is made/lodged during the time, the same shall be binding and continue to be valid despite the lapse of this Pacts as specified above, unless it is discharged/determined by the Competent Authority.

Article 7- Other Provisions

- 1) This Pact is subject to Indian Law, place of performance and jurisdiction is the Headquarters of the Principal/Owner, who has floated the Tender.
- 2) Changes and supplements need to be made in writing. Side agreements have not been made.
- 3) If the Contractor is a partnership or a consortium, this Pact must be signed by all the partners or by one or more partner holding power of attorney signed by all partners and consortium members. In case of a Company, the Pact must be signed by a representative duly authorized by board resolution.
- 4) Should one or several provisions of this Pact turn out to be invalid; the remainder of this Pact remains valid. In this case, the parties will strive to come to an agreement to their original intentions.

- 5) It is an agreed term and condition that any dispute or difference arising between the parties with regard to the terms of this Integrity Agreement / Pact, any action taken by the Owner/Principal in accordance with this Integrity Agreement/ Pact or interpretation thereof shall not be subject to arbitration.

Article 8- LEGAL AND PRIOR RIGHTS

All rights and remedies of the parties hereto shall be in addition to all the other legal rights and remedies belonging to such parties under the Contract and/or law and the same shall be deemed to be cumulative and not alternative to such legal rights and remedies aforesaid. For the sake of brevity, both the Parties agree that this Integrity Pact will have precedence over the Tender/Contact documents with regard any of the provisions covered under this Integrity Pact.

IN WITNESS WHEREOF the parties have signed and executed this Integrity Pact at the place and date first above mentioned in the presence of following witnesses:

.....
(For and on behalf of Principal/Owner)

.....
(For and on behalf of Bidder/Contractor)

WITNESSES:

1.
(signature, name and address)

2.
(signature, name and address)

Place:

Dated :

ARBITRATION

In the unfortunate situation if any all disputes, disagreement and controversies arising in any manner, which cannot be settled by mutual agreement between the two parties, shall be resolved through arbitration. The number of arbitrators shall be ONE, shall be appointed by Director, IIT Ropar. The decision of sole arbitrator shall be final and binding to both the parties. All provisions of Arbitration and Conciliation Act 1996 (with amendments) shall apply and the legal place of arbitration shall be Rupnagar, Punjab. The language of arbitration proceedings shall be English. The Court which has jurisdiction in the matter is District Court, Rupnagar, Punjab.

Approved makes list

Apart from the proposed technology the following specifications / brands names of materials to be used as listed wherever required. The efforts should be made by the agency to use indigenous products. The agency should also consider the availability of spares parts/components for maintenance purposes while proposing any brand / manufacturer. The materials of any other brand/manufacturer may be proposed for use by the agency in case the brands specified below are not available in the market and / or agency intends to use some other brand better than the brands mentioned in this list. The alternate brand can be used only after the approval of Competent Authority. The list of approved make for civil works is given below:

S. No.	materials	Approved Make
For Civil Works		
1	PPC /OPC CEMENT	ACC/ ULTRATECH/ AMBUJA, JK BIRLA
2	WHITE CEMENT	JK WHITE / BIRLA WHITE / TRAVANCORE
3	REINFORCEMENT STEEL	TATA / SAIL / JINDAL STEEL / RINL
4	STRUCTURAL STEEL SECTIONS	SAIL / TATA STEEL LTD. / RINL AND JINDAL STEEL & POWER LTD.
5	AAC BLOCK	BUILDTECH / MAGICRETE BUILDING SOLUTION / AEROCON / INDO BHUTAN CONSTRUCTION SOLUTION
6	AAC BLOCK ADHESIVE	UNTRATECH / FERROUSCRETE / BAL ENDURA
7	POLYMER MODIFIED CEMENTITIOUS GROUT	BAL ENDURA / WEBBER / MYK LATICRETE
8	EPOXY MORTAR	FOSROC / SIKA / CICO / LATICRETE
9	FLUSH DOORS	GREEN / DURO / MERINO / MAYUR / ARCHID / KUTTY
10	UPVC WINDOWS / DOORS / VENTILATORS	ENCRAFT / ALUPLAST / REHAU / DUROPLAST
11	WOODEN / METAL / GLAZE - FIRE RATED DOOR SHUTTERS	NAVAIR / SUKRI / PROMAT / KUTTY / BHAWANI / PACIFIC
12	HINGES & BRASSWARE	SHALIMAR / INDO-BRASS / AMARBHOY DOSSAJI / EARL BIHARI / MAGNUM / KICH

13	ALL TYPES OF GLASS	AIS / MODIGUARD / PILKINGTON / GLAVERBEL / SAINT GOBBIN
14	FIRE-RATED GLASS (TWO HOUR FIRE RATING) TRANSPARENT CLEAR GLASS	GLAVERBEL / SAINT GOBBIN / PYROGUARD / SHOTT
15	ALL HARDWARE AND FITTING FOR ALL TYPES OF GLAZING / DOORS / WINDOWS	DORMA / HAFELE / GEZEI / KICH / GODREJ / ASSA-ABLOY
16	ADHESIVE	ANCHOR / DUNLOP / PIDILITE-FEVICOL
17	STAINLESS STEEL DOOR HANDLES / LOCKS AND FITTINGS	DORMA / HAFELE / GEZEI / KICH / GODREJ / ASSA-ABLOY
18	SS MESH	GKD / WMW
19	COMMERCIAL PLY / BOARD	DURO / CENTURY / ARCHID / DURIAN
20	HARDWARE ACCESSORIES FOR FIRE DOORS / PANIC BAR / PANIC TRIM / DOOR CLOSER / HINGES / MORTISE LOCK	INDERSOLL ROND / DORMA / GEZE / HAFELE / ASSA-ABLOY / KICH
21	VITREOUS CHINA WARE	HINDWARE / PARRYWARE / CERA / JOHNSON / KEROVIT
22	RCC PIPES	PRAGATI / LAKSHMI / SOOD & SOOD / JAIN & CO.
23	UPVC / CPVC PIPES & FITTINGS	SUPREME / PRINCE / ASTRAL / FINOLEX / SURYA ROSHNI / ASHIRWAD
24	STAINLESS STEEL SINKS	NEELKANTH / NIRALI / CERA
25	SPUN CAST IRON PIPES & FITTINGS (IS:3989)	JAISWAL NECO / RIF / SKF / BIC
26	STONEWARE PIPES AND GULLY TRAPS	PERFECT / BURN / ANAND / PARRY
27	GUNMENTAL VALVES (FULL WAY VALVE) CLASS - 1	ZOLOTO / SCastle / KARTAR
28	CI DOUBLE FLANGED SLUICE VALVE	KIRLOSKAR / IVC / SONDHI / KEHRIWAL
29	CI MANHOLE FRAME & COVERS AND CI GRATING	NECO / RIF / SKR / BIC
30	SANITARY CP FITTINGS &	ORIENTAL SERIES OF MARC FOR

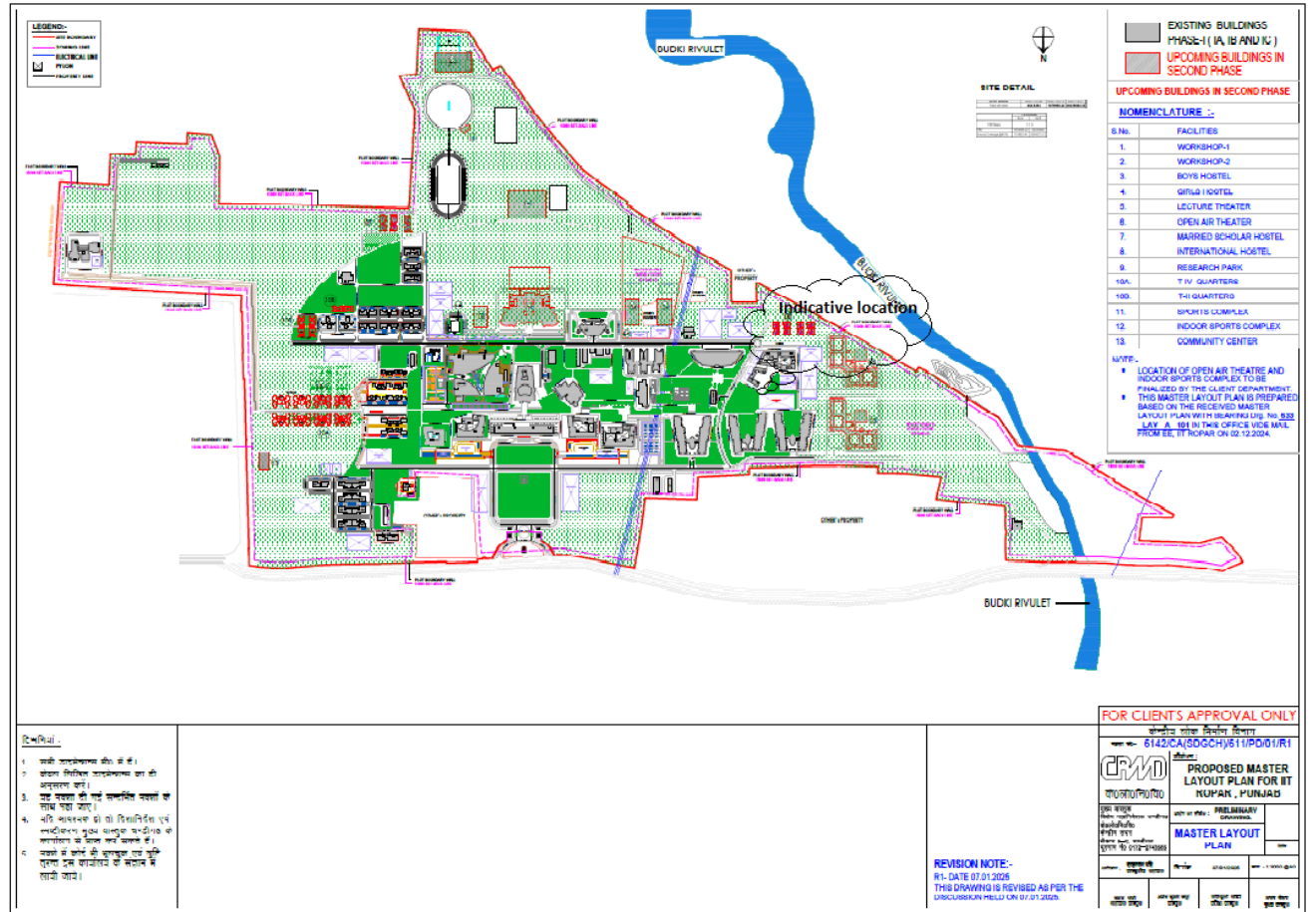
	ACCESSORIES	EQUIVALENT SERIES OF JAQUAR / PARRYWARE / GROHE / KHOLAR
31	FLOOR TRAPS	JANYA / CHILLY / NIRALI
32	PVC WATER TANK	SINTEX / POLYCON / SPL
33	CERAMIC TILES / VITRIFIED TILES	H & r JOHNSON / SOMANY / KAJARIA / ASIAN (AGL)
34	SYNTHETIC ENAMEL PAINT / PRIMER / DISTEMPER / EXTERIOR DECORATIVE PAINT	1ST QUALITY PRODUCTS OF ASIAN / BERGER / ICI (DULUX) / NEROLAC
35	WALL PUTTY / COURSE PUTTY	1ST QUALITY PRODUCTS OF: ASIAN WHITE / JK WHITE / FERROUS CRETE / BERGER
36	TILE ADHESIVE / EPOXY GROUTS	FERROUS CRETE / BALL ENDURA / PIDILITE / LATI CRETE
37	PAVERS / GRASS PAVERS / KERB STONE	UNISTONE / ULTRA / HINDUSTAN / KK
38	BUILDING SIGNAGE	HINDUSTAN SIGNAGES PVT. LTD. / PR GRAPHICS / MODIVATTE SOLUTION / GALAXY SIGNAGE, SIGNUTRA
39	STRUCTURAL STEEL	SAIL / RINL / TATA STEEL / JINDAL / ESSOR OR AS APPROVED BY CLIENT
40	ELECTRODES	ADOR (ADVANIORLIKON) / D&H ESAD OR EQUIVALENT APPROVED MANUFACTURERS AS APPROVED BY CLIENT
41	PAINT	BERGER / SHALIMAR / EKZO-NOBEL / SIGMA COATING / ASIAN PAINTS/ GRAND POLYCOAT OR AS APPROVED BY CLIENT

S. No.	materials	Approved Make
For Electrical Works		
1	FRLS PVC insulated copper wire / Power cable / XLPE Cable / Telephone cable	L&T / HAVELL / POLYCAB / FINOLEX / SKYTONE
2	Co-axial TC cable	L&T / HAVELL / POLYCAB / FINOLEX / SKYTONE

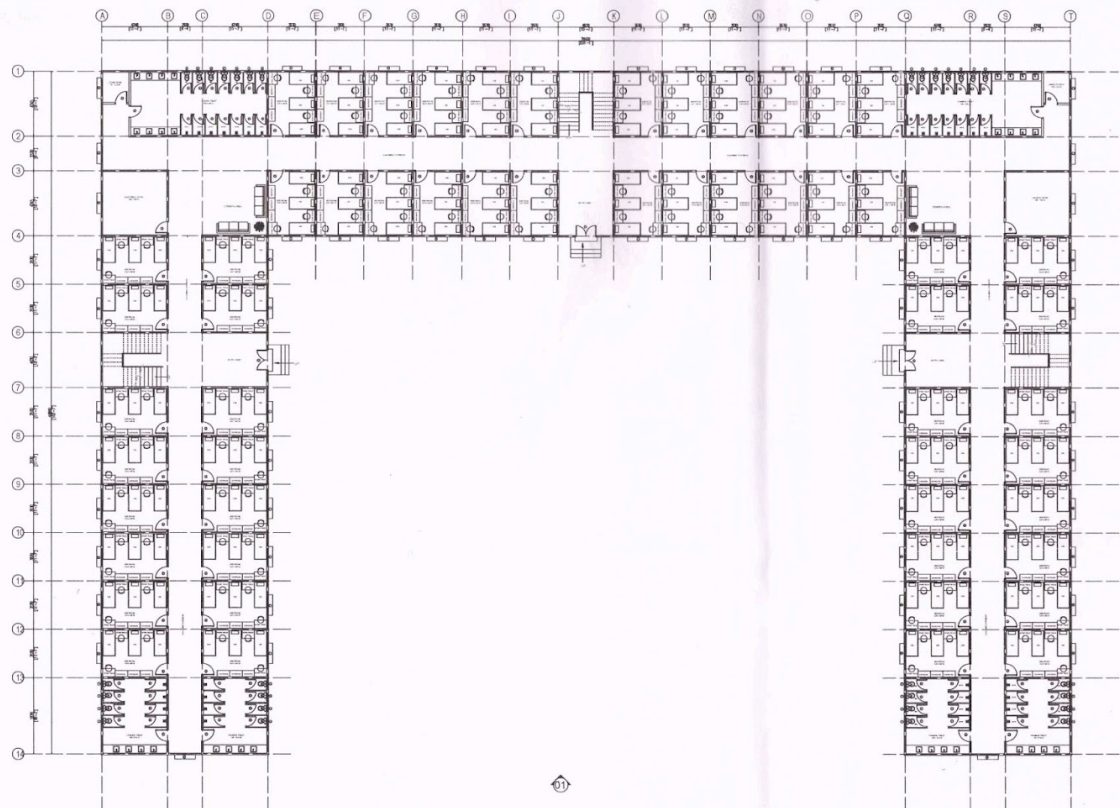
3	Steel Conduit	RM CON / AKG / BEC ISI MARKED
4	PVC Conduit	AKG / POLYCAB / PRINCE ISI MARKED
5	L.T. Panel / Meter Board	ADLECMUNDKA / ASSOCIATED SWITCH GEARS AND PROJECT LTD. / SUDHIR GENSET LTD. / CONTROL AND SWITCHGEARS PVT. LTD. / KEPL / TRICOLITE
6	MCB/MCB DB / prewired MCB DB and sheet steel Metal enclosed industrial socket, plug top and Isolators	LEGRAND / SIEMENS / L&T / ABB / SCHNIEDER
7	Modular type switch / socket, telephone socket / cable TV Antenna socket, Electronic fan regular and Gi boxes	LEGRAND (MYLINC / HAVELLS / HONEYWELL (MIDAS) / NORTH WEST (NOVA)
8	LED fittings	PHILIPS / CROMPTON / WIPRO / GE / ZUMPOBEL / TRILUX
9	Ceiling fan / Exhaust fan	CROMPTON GREAVES / ALMONARD / HAVELLS / USHA
10	Octagonal steel pole	BAJAJ / TWINKLE / VALMART
11	Air Circuit Breaker / MCCB	L&T-U POWER / SEIMENS-3WL / ABB-EMAX / SCHNEIDER - MASTERPACT-NW
12	Fire Extinguishers	SAFEX / MINIMEX / SUPEREX / CEASEFIRE
13	Diesel operated power Generating Engine	CUMMINS INDIA / CATERPILLAR / PERKINS / KOEL GREEN
14	Alternator	STAMFORD / LEROY SOMER / CATERPILLAR / KOEL GREEN
15	VRV/ VRF	O-General Mitsubishi Daikin
16	Copper Conductor Control Cable	BONTON / LAPP CABLE / HAVELLS / RR KABEL / L&T / RAJNIGANDHA
17	Communication Cable / Signal Cable	LAPP CABLE / FUSION POLYMER / BELDON
18	Fire / Sprinkler Main Pump / Jockey Pump	MATHER & PLATT INDIA LIMITED / GRUNDFOS / KIRLOSKAR / KSB

19	Diesel engine	CUMMINS / KIRLOSKAR / CATERPILLAR
20	Motor	ABB / SIEMENS / KIRLOSKAR / CROMPTON GREAVES
21	Anti Vibration Mounting	KANWAL INDUSTRIAL CORPORATION / RESISTOFLEX / EWREN
22	Starter	L&T / SIEMENS / CROMPTON / GE / ABB / BCH
23	Addressable Multi Criteria Smoke Detector with base / Addressable Duct Type Smoke Detector with base / Fault Isolator with base / Addressable Heat Detectors with base / Addressable Manual Call points / Addressable Monitor Modular / Sounder / Hooter cum Strobe / Fire Alarm Control Panel / PA System Panel / Telephone Jack / Hand Set / Software Speaker	NOTIFIER / SIEMENS / BOSCH / EDWARD
24	Fireman Axe / Installation Control valve	SAFEX / PADMINI / GETECH
25	2-way / 4-way FBC	SAFEX / NEWAGE (MUMBAI) / GETECH TYCO / HD
26	Window Sprinkler	TYCO /HD
27	Deluge Valve	SAFEX / TYCO / HD
28	Air release valve	SUPEREX / GETECH / NEWAGE / SAFEX

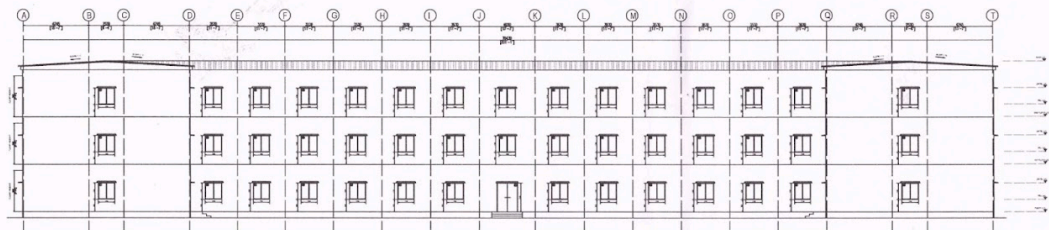
LOCATION MAP



Ground Floor Plan

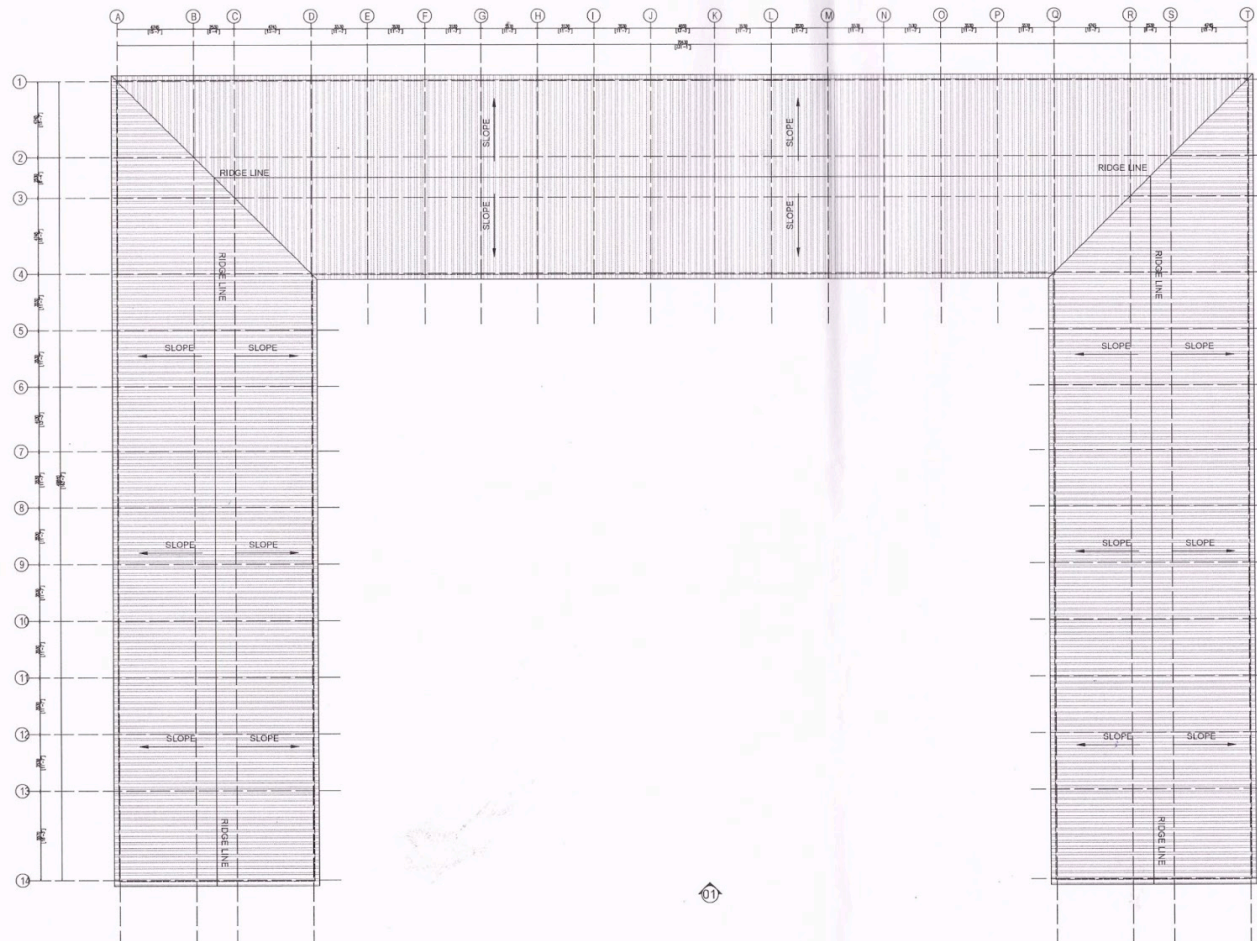


01 GROUND FLOOR PLAN
PROTOTYPE HOSTEL BUILDING
Hatched
Scale - 1:50



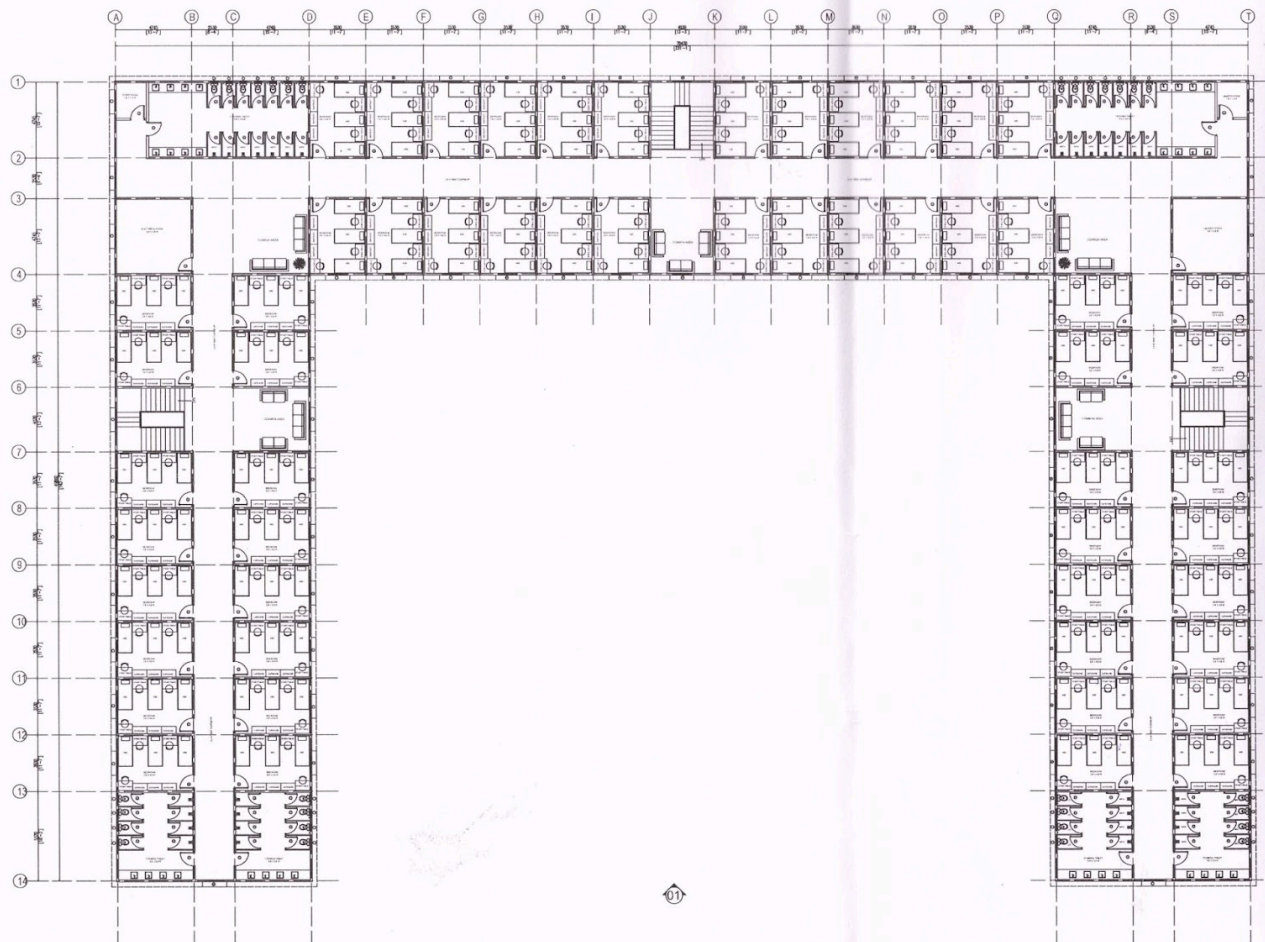
02 ELEVATION AT 01
PROTOTYPE HOSTEL BUILDING
Hatched
Scale - 1:50

Roof Plan



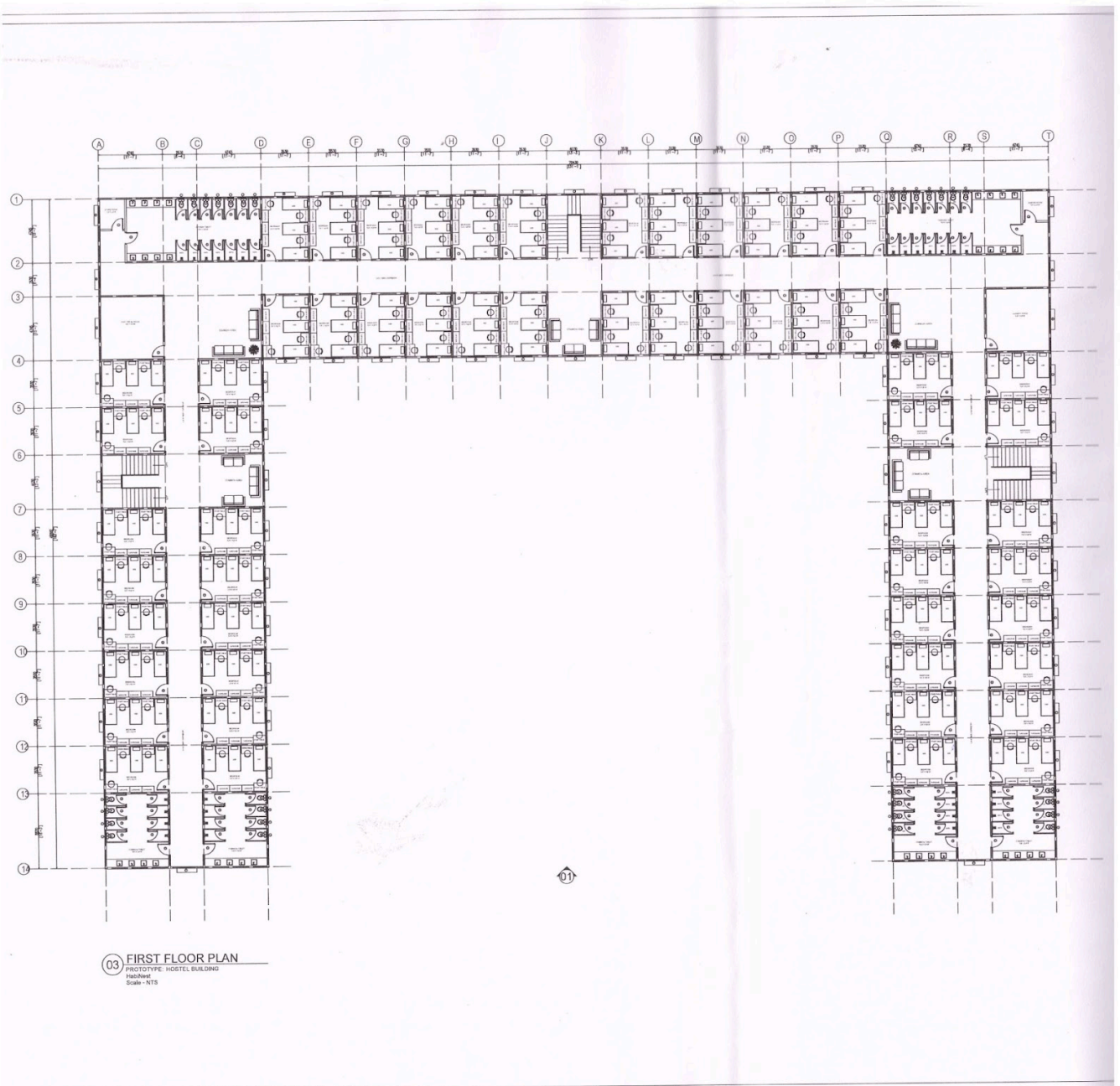
05 ROOF PLAN
 PROTOTYPE HOSTEL BUILDING
 HANNEKE
 Scale: 1/125

Second Floor Plan



04 SECOND FLOOR PLAN
PROTOTYPE HOSTEL BUILDING
Hashtest
Scale - NTS

First Floor Plan



**GUARANTEE BOND TO BE EXECUTED BY CONTRACTOR FOR REMOVAL OF DEFECTS
AFTER COMPLETION IN RESPECT OF WATER PROOFING WORKS**

The Agreement made this day of two thousand and between son of of (hereinafter called the Guarantor of the one part) and the (hereinafter called Government of the other part)

WHEREAS this agreement is supplementary to a contract (hereinafter called the Contract) dated and made between GUARANTOR of the one part and the Government of the other part, whereby the Contractor, inter alia, undertook to render the buildings and structures in the said contract recited completely water and leak-proof.

AND WHEREAS GUARANTOR agreed to give a guarantee to the effect that the said structures will remain water and leak-proof for five years from the date of giving of water proofing treatment.

NOW THE GUARANTOR hereby guarantees that water proofing treatment given by him will render the structures completely leak-proof and the minimum life of such water proofing treatment shall be five years to be reckoned from the date after the maintenance period prescribed in the contract.

Provided that the guarantor will not be responsible for leakage caused by earthquake or structural defects or misuse of roof or alteration and for such purpose:

- (a) Misuse of roof shall mean any operation which will damage proofing treatment, like chopping of firewood and things of the same nature which might cause damage to the roof.
- (b) Alteration shall mean construction of an additional storey or a part of the roof or construction adjoining to existing roof whereby proofing treatment is removed in parts;
- (c) The decision of the Engineer-in-charge with regard to cause of leakage shall be final.

During this period of guarantee the guarantor shall make good all defects and in case of any defect being found, render the building water-proof to the satisfaction of the Engineer-in-charge at his cost, and shall commence the work for such rectification within seven days from the date of issue of the notice from the Engineer-in-charge calling upon him to rectify the defects, failing which the work be got done by the Department by some other contractor at the GUARANTOR's cost and risk. The decision of the Engineer-in-charge as to the cost, payable by the Guarantor shall be final and binding.

That if GUARANTOR fails to execute the water proofing or commits breach thereunder then the GUARANTOR will indemnify the Principal and his successors against all loss, damage, cost, expense or otherwise which may be incurred by him by reason of any default on the part of the GUARANTOR in performance and observance of this supplementary agreement. As to the amount of loss and /or damage and/or cost incurred by the Government the decision of the Engineer-in-charge will be final and binding on the parties.

IN WITNESS WHEREOF these presents have been executed by the Obligor and by
and for and on behalf of the on the day, month and year first above written.

Signed, sealed and delivered by OBLIGOR in the presence of -

- 1.
- 2.

Signed for and on behalf of in the presence of

- 1.

FINANCIAL QUOTE

SCHEDULE OF QUANTITIES

Name of work:

S. No.	Description of Item	Quantity	Unit	Rate in figures	Rate in words	Amount Rs.
1	Design, Supply and Construction of 500 Seater Hostel (G+2) using Precast/LGSF Technology in IIT Ropar on EPC Turnkey basis as per the scope of work, drawings and directions of Competent Authority including all tools, tackles, manpower, materials, machinery, working at all heights, GST, etc. Nothing to be paid extra. Excluding 1a and 1b scope mentioned below.	1	L.S.			
1a	Extra for Design, Supply, Installation, Testing and Commissioning of VRV/VRF system					
1b	Extra for Active Components of Information Technology, UPS, CCTV					
2	Extra for Operation & Maintenance as per the tender document including scope of work, manpower, civil, electrical, mechanical, plumbing, VRV etc. taxes, GST all included. Nothing to be paid extra.					
	For 4th year with material	1	L.S.			
	For 5th year with material	1	L.S.			
	Grand Total					

Note : Criteria for evaluation will be the grand total of above. The Institute will award for Operation and Maintenance after the completion of Defect Liability Period.

Help

Tender No: IITRPR/ENM/T/25/42

Name of the Bidder/ Bidding Firm / Company :								
<p align="center">PRICE SCHEDULE (DOMESTIC TENDERS - RATES ARE TO GIVEN IN RUPEES (INR) ONLY) (This BOQ template must not be modified/replaced by the bidder and the same should be uploaded after filling the relevant columns, else the bidder is liable to be rejected for this tender. Bidders are allowed to enter the Bidder Name and Values only)</p>								
NUMBER #	TEXT #	TEXT #	NUMBER #	TEXT #	TEXT #	NUMBER #	NUMBER #	TEXT #
Sl. No.	Item Description	Item Code / Make	Quantity	Units	Quoted Currency in INR / Other Currency	BASIC RATE is inclusive GST and other taxes Rs. P	TOTAL AMOUNT with Taxes col (14) = sum (8) to (13) in	TOTAL AMOUNT In Words
1.01	Design, Supply and Construction of 500 Seater Hostel (G+2) using Precast/LGSF Technology in IIT Ropar on EPC Turnkey basis as per the scope of work, drawings and directions of Competent Authority including all tools, tackles, manpower, materials, machinery, working at all heights, GST, etc. Nothing to be paid extra. Excluding 1a and 1b scope mentioned below.	item1	1.00	L.S.	INR		0.00	INR Zero Only
1.02	1a) Extra for Design, Supply, Installation ,Testing and Commissioning of VRV/VRF system							
1.03	1b) Extra for Active Components of Information Technology,UPS, CCTV							
1.04	Extra for Operation & Maintenance as per the tender document including scope of work, manpower, civil, electrical, mechanical, plumbing, VRV etc. taxes, GST all included. Nothing to be paid extra.							Note : Criteria for evaluation will be the grand total. The Institute will award for Operation and Maintenance after the completion of Defect Liability Period.
1.05	For 4th year with material	item2	1.00	L.S.	INR		0.00	INR Zero Only
1.06	For 5th year with material	item3	1.00	L.S.	INR		0.00	INR Zero Only
Total in Figures							0.00	INR Zero Only
Quoted Rate in Figures				Select		%	0	Zero Only
Quoted Rate in Words	INR Zero Only							